

**PATTERN** Cher's Wave  
**COLOR** Cameo

**BRAND**

**Fabricut**

**APPLICATION**

**Fabric**

**CATEGORIES**

**Wide Width, NFPA 701 FR, Washable, Eco / Environment Plus**

**COLORS**

**Pink**

**DESIGN TYPES**

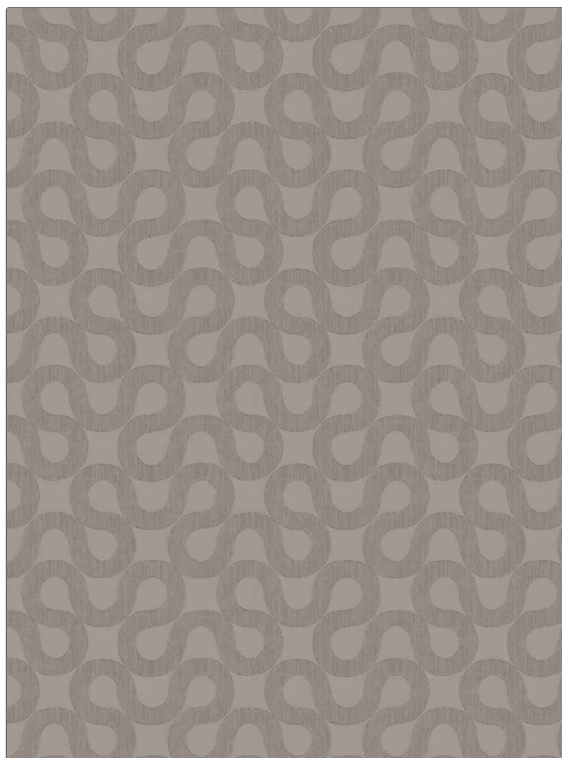
**Contemporary / Modern, Scrollwork**

**SCALE**

**Medium**

**RAILROADED**

**Railroaded**



**WIDTH**

**122.00 in (309.88 cm)**

**VERTICAL REPEAT**

**9.49 in (24.10 cm)**

**HORIZONTAL REPEAT**

**9.33 in (23.70 cm)**

**CONTENT**

**87% Recycled Polyester, 13% Polyester**

**BACKING**

**FIRE CODES**

**Passes NFPA 701, Passes MVS 302**

**PRODUCT NUMBER**

**1978801**

**COUNTRY**

**India**

**CLEANING CODES**

**S**

**ADDITIONAL PRODUCT NOTES**

**Oeko Tex Standard 100, Iso 14001, Ca Tb 117-2013, Passes Can / ULC-S109, Shown Railroaded, Exclusive Pattern, Din 4102 (B1), Bs 5867 Part 2 Type B & C**