

# FABRICUT<sup>®</sup> Fabric Product Details

**PATTERN** Sky  
**COLOR** Tulip

**BRAND**

**Fabricut**

**APPLICATION**

**Fabric**

**USES**

**Upholstery**

**CATEGORIES**

**Wool / Faux Wool, Easy To Clean, Fibreguard, Wovens, Eco / Environment Plus**

**BOOK**

**Fibreguard Cleanable Wovens**

**COLORS**

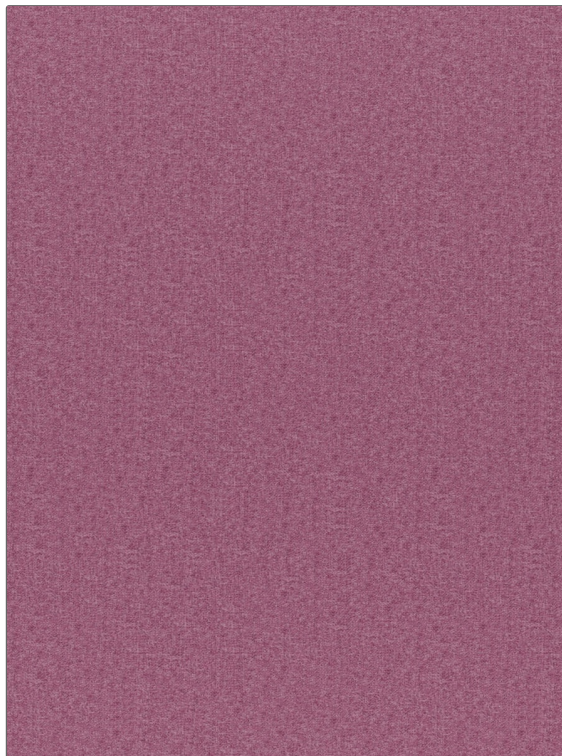
**Pink**

**DESIGN TYPES**

**Herringbone, Small Scale Woven, Texture Plain, Chevron, Houndstooth**

**RAILROADED**

**Not Railroaded**



**WIDTH**

**56.00 in (142.24 cm)**

**FINISH**

**Fibreguard**

**VERTICAL REPEAT**

**0.00 in (0.00 cm)**

**HORIZONTAL REPEAT**

**0.00 in (0.00 cm)**

**CONTENT**

**100% Polyester**

**BACKING**

**FIRE CODES**

**UFAC Class I / NFPA 260, Passes MVS 302**

**DOUBLE RUBS**

**Exceeds 40,000 Double Rubs (Wyzenbeek Method)**

**PRODUCT NUMBER**

**2775920**

**DATE BOOKED**

**09/2020**

**COUNTRY**

**China**

**CLEANING CODES**

**WW**

**ADDITIONAL PRODUCT NOTES**

**Fibreguard, Pfas-Free, Easy To Clean Finish, Passes 45,000 Martindale Tst, Oeko Tex Standard 100, Iso 14001, Ca Tb 117-2013, Exclusive Pattern, Eco / Environment Plus**