

# Fabric Product Details

**PATTERN** Fully Present  
**COLOR** 01

**BRAND**

**S. Harris**

**APPLICATION**

**Fabric**

**USES**

**Multipurpose**

**CATEGORIES**

**Wool, Wovens**

**COLORS**

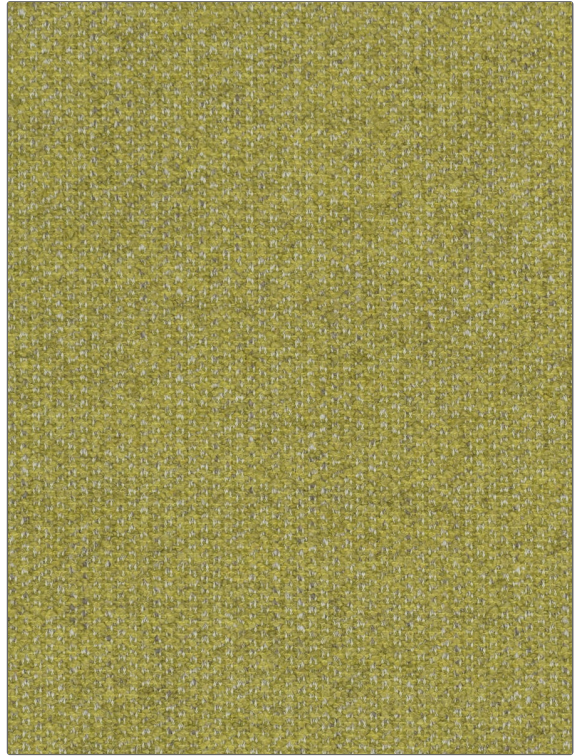
**Green, White**

**DESIGN TYPES**

**Texture Plain,  
Contemporary / Modern**

**RAILROADED**

**Not Railroaded**



**WIDTH**

**54.00 in (137.16 cm)**

**VERTICAL REPEAT**

**0.00 in (0.00 cm)**

**HORIZONTAL REPEAT**

**0.00 in (0.00 cm)**

**CONTENT**

**34% Acrylic, 24% Cotton,  
14% Wool, 12% Viscose,  
12% Polyester, 4% Linen**

**BACKING**

**Light Acrylic Backing**

**FIRE CODES**

**UFAC Class I / NFPA 260**

**DOUBLE RUBS**

**Exceeds 65,000 Double  
Rubs (Wyzenbeek Method)**

**PRODUCT NUMBER**

**3003801**

**COUNTRY**

**Italy**

**CLEANING CODES**

**S**

**ADDITIONAL PRODUCT NOTES**

**Ca Tb 117-2013, Light Acrylic Backing, Exclusive Pattern**