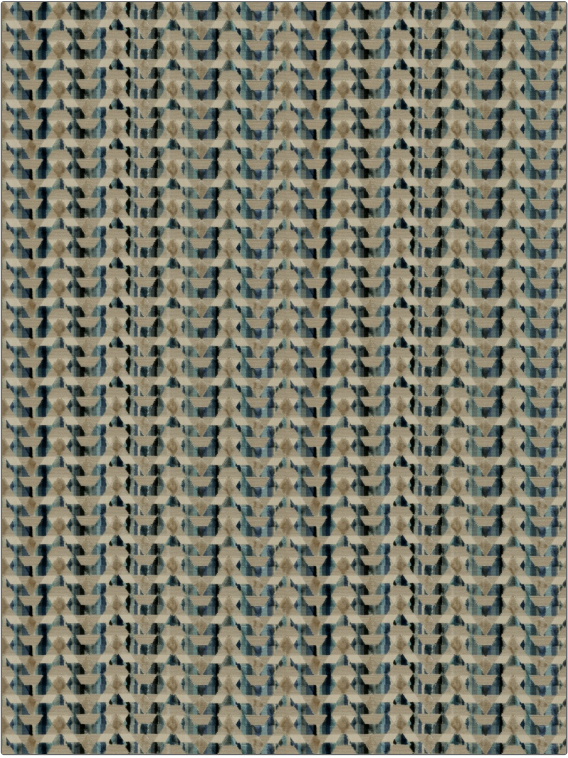


# Fabric Product Details

<b>PATTERN</b>	<b>Hasina</b>
<b>COLOR</b>	<b>Midnight</b>
<b>BRAND</b>	<b>APPLICATION</b>
<b>S. Harris</b>	<b>Fabric</b>
<b>USES</b>	<b>CATEGORIES</b>
<b>Upholstery</b>	<b>Velvet / Grospoint, Wovens</b>
<b>BOOK</b>	<b>COLORS</b>
<b>Geotrybal</b>	<b>Blue, Aqua / Teal</b>
<b>DESIGN TYPES</b>	<b>SCALE</b>
<b>Contemporary / Modern</b>	<b>Medium</b>
<b>RAILOADED</b>	
<b>Not Railroaded</b>	



<b>WIDTH</b>	<b>VERTICAL REPEAT</b>	<b>HORIZONTAL REPEAT</b>	<b>CONTENT</b>
<b>52.00 in (132.08 cm)</b>	<b>1.80 in (4.57 cm)</b>	<b>13.60 in (34.54 cm)</b>	<b>92% Viscose, 8% Polyester</b>
<b>BACKING</b>	<b>FIRE CODES</b>	<b>DOUBLE RUBS</b>	<b>PRODUCT NUMBER</b>
	<b>UFAC Class I / NFPA 260</b>	<b>Exceeds 20,000 Double Rubs (Wyzenbeek Method)</b>	<b>8408603</b>
<b>DATE BOOKED</b>	<b>COUNTRY</b>	<b>CLEANING CODES</b>	
<b>01/2017</b>	<b>Belgium</b>	<b>S</b>	

<b>ADDITIONAL PRODUCT NOTES</b>
<b>Passes 25,000 Martindale Tst, Ca Tb 117-2013, Exclusive Pattern</b>