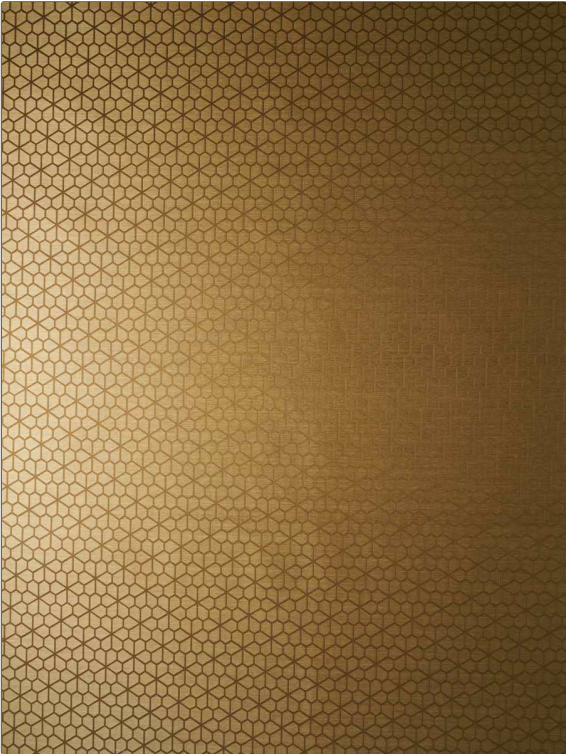


Wallcovering Product Details

PATTERN 14028W Batignolles
COLOR Caramel 01

| | |
|---------------------------------------|---|
| BRAND | APPLICATION |
| S. Harris | Wallcovering |
| CATEGORIES | BOOK |
| Raffia, Textures, Wallpaper, En 15102 | Habitat Wallcovering |
| COLORS | DESIGN TYPES |
| Taupe / Tan, Orange / Spice | Geometric / Abstract, Contemporary / Modern, Texture Raised |
| SCALE | |
| Small | |



| | | | |
|-----------------------|--|--------------------------|--|
| WIDTH | VERTICAL REPEAT | HORIZONTAL REPEAT | CONTENT |
| 47.60 in (120.90 cm) | 13.00 in (33.02 cm) | 6.80 in (17.27 cm) | Backing: 60% Cellulose, 40% Polyester, Face: 70% Nylon 30% Viscose |
| BACKING | FIRE CODES | PRODUCT NUMBER | DATE BOOKED |
| Untrimmed, Strippable | Passes ASTM-E84, Ce Mark Certified, Passes EN15102 | 8813401 | 09/2016 |
| COUNTRY | | | |
| Italy | | | |

ADDITIONAL PRODUCT NOTES

Untrimmed, Strippable, Paste The Wall, Ce Mark Certified, Passes EN15102, Straight / Side Match, Spongeable, Unpasted, Exclusive Pattern