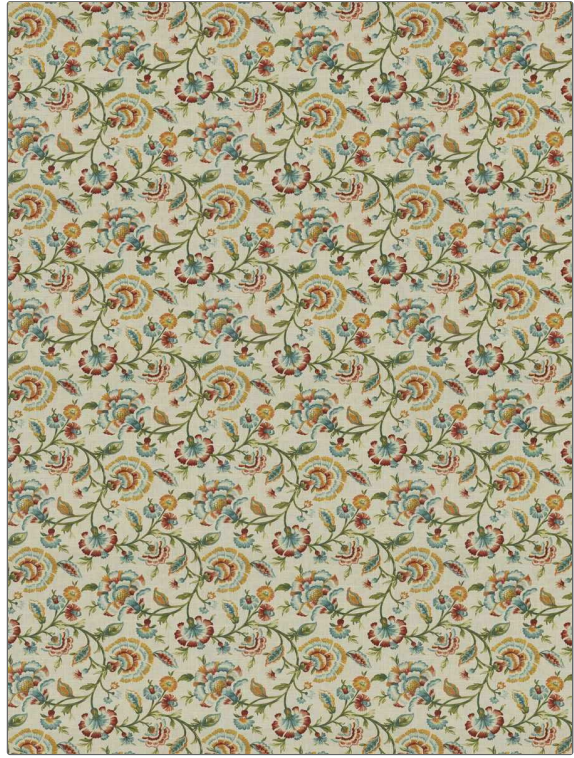


# Fabric Product Details

|   |   |
|---|---|
| <b>PATTERN</b>  | <b>04597</b>                                    |
| <b>COLOR</b>  | <b>Primavera</b>                                |
| <b>BRAND</b>  | <b>APPLICATION</b>                              |
| <b>Trend</b>  | <b>Fabric</b>                                   |
| <b>USES</b>   | <b>CATEGORIES</b>                               |
| <b>Bedding, Drapery, Multipurpose</b>                     | <b>Prints</b>                                   |
| <b>BOOK</b>   | <b>COLORS</b>                                   |
| <b>Lifestyles By Color IX (4 Books) Celestial / Coral</b> | <b>Aqua / Teal, Orange / Spice, Multi-Color</b> |
| <b>DESIGN TYPES</b>                                       | <b>SCALE</b>                                    |
| <b>Floral, Print Pattern</b>                              | <b>Medium</b>                                   |
| <b>RAILROADED</b>   |   |
| <b>Not Railroaded</b>                                     |   |



|                             |  |                                |  |
|-----------------------------|--|--------------------------------|--|
| <b>WIDTH</b>                | <b>FINISH</b>                            | <b>VERTICAL REPEAT</b>         | <b>HORIZONTAL REPEAT</b>                             |
| <b>54.00 in (137.16 cm)</b> | <b>Soil &amp; Stain Repellent Finish</b> | <b>17.00 in (43.18 cm)</b>     | <b>18.50 in (46.99 cm)</b>                           |
| <b>CONTENT</b>              | <b>BACKING</b>                           | <b>FIRE CODES</b>              | <b>DOUBLE RUBS</b>                                   |
| <b>55% Linen, 45% Rayon</b> |  | <b>UFAC Class I / NFPA 260</b> | <b>Exceeds 12,000 Double Rubs (Wyzenbeek Method)</b> |
| <b>PRODUCT NUMBER</b>       | <b>DATE BOOKED</b>                       | <b>COUNTRY</b>                 | <b>CLEANING CODES</b>                                |
| <b>9810101</b>              | <b>02/2019</b>                           | <b>China</b>                   | <b>S</b>   |

|  |
|--|
| <b>ADDITIONAL PRODUCT NOTES</b>                          |
| <b>Soil &amp; Stain Repellent Finish, Ca Tb 117-2013</b> |