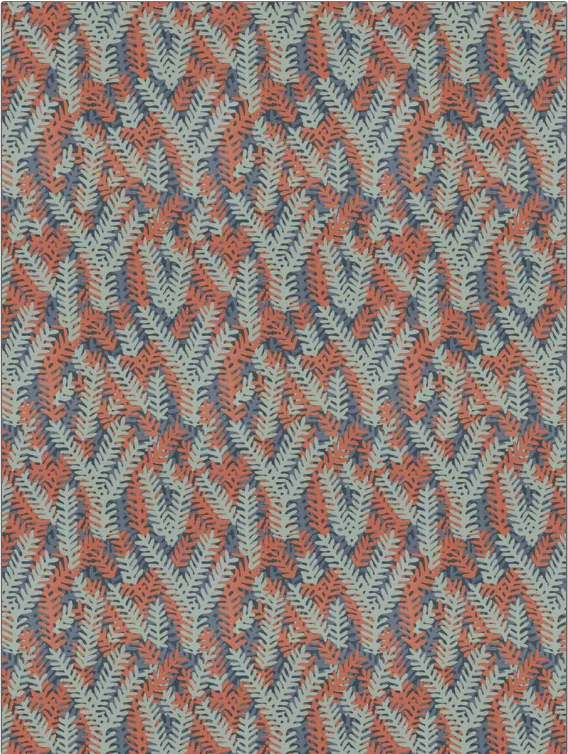


# Fabric Product Details

**PATTERN** Capistrano  
**COLOR** Rain

|                                |                            |
|--------------------------------|----------------------------|
| <b>BRAND</b>                   | <b>APPLICATION</b>         |
| Vervain                        | Fabric                     |
| <b>USES</b>                    | <b>CATEGORIES</b>          |
| Bedding, Drapery, Multipurpose | Prints                     |
| <b>BOOK</b>                    | <b>COLORS</b>              |
| Denise McGaha                  | Blue, Light Blue, Burgundy |
| <b>DESIGN TYPES</b>            | <b>SCALE</b>               |
| Leaves, Contemporary / Modern  | Large                      |
| <b>RAILROADED</b>              |                            |
| Not Railroaded                 |                            |



|                      |                         |   |                       |
|----------------------|-------------------------|---|-----------------------|
| <b>WIDTH</b>         | <b>VERTICAL REPEAT</b>  | <b>HORIZONTAL REPEAT</b>                      | <b>CONTENT</b>        |
| 56.00 in (142.24 cm) | 23.00 in (58.42 cm)     | 17.25 in (43.82 cm)                           | 55% Linen, 45% Cotton |
| <b>BACKING</b>       | <b>FIRE CODES</b>       | <b>DOUBLE RUBS</b>                            | <b>PRODUCT NUMBER</b> |
|                      | UFAC Class I / NFPA 260 | Exceeds 36,000 Double Rubs (Wyzenbeek Method) | 1719406               |
| <b>DATE BOOKED</b>   | <b>COUNTRY</b>          | <b>CLEANING CODES</b>                         |                       |
| 01/2023              | India                   | S   |                       |

**ADDITIONAL PRODUCT NOTES**  
Ca Tb 117-2013, Exclusive Pattern