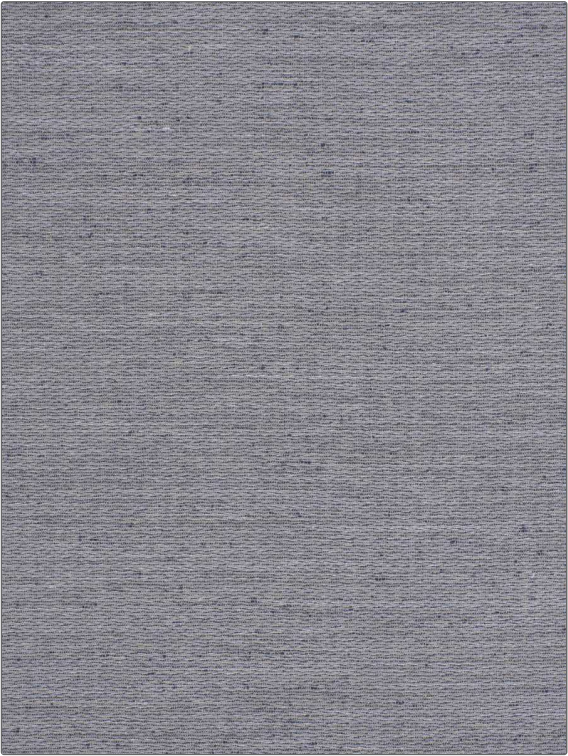


Fabric Product Details

PATTERN Lynton
COLOR Ink



BRAND	APPLICATION
Vervain	Fabric
USES	CATEGORIES
Bedding, Upholstery	Solids / Small Scale Patterns
BOOK	COLORS
Vervain Fall 2017 The New York Botanical Garden	Blue
DESIGN TYPES	RAILROADED
Texture Plain	Not Railroaded

WIDTH	VERTICAL REPEAT	HORIZONTAL REPEAT	CONTENT
54.00 in (137.16 cm)	0.00 in (0.00 cm)	0.00 in (0.00 cm)	37% Rayon, 34% Linen, 29% Polyester
BACKING	FIRE CODES	DOUBLE RUBS	PRODUCT NUMBER
	UFAC Class I / NFPA 260	Exceeds 15,000 Double Rubs (Wyzenbeek Method)	9025601
DATE BOOKED	COUNTRY	CLEANING CODES	
11/2017	USA	S	

ADDITIONAL PRODUCT NOTES

Exclusive Pattern