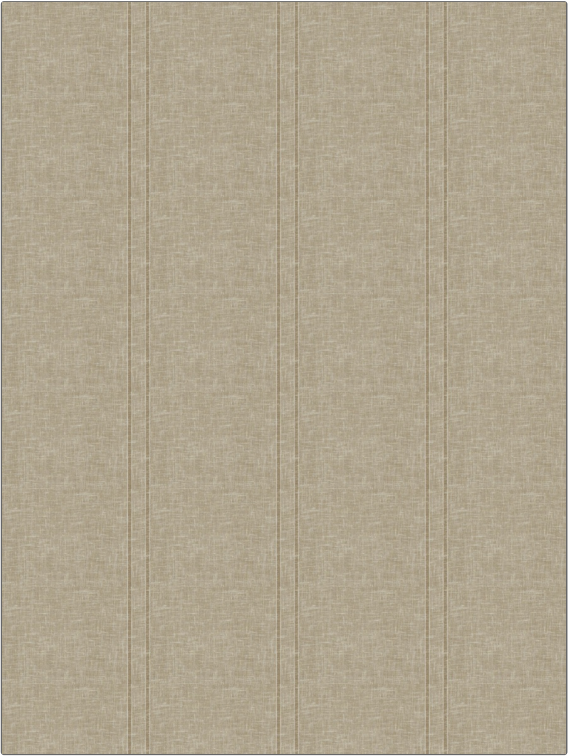


| | |
|---------|----------------|
| PATTERN | Weyland Stripe |
| COLOR | 02 |

| | |
|-------------|----------------|
| BRAND | APPLICATION |
| Fabricut | Fabric |
| USES | CATEGORIES |
| Drapery | Sheer, Linen |
| COLORS | DESIGN TYPES |
| Taupe / Tan | Stripes |
| SCALE | RAILROADED |
| Medium | Not Railroaded |



| | | | |
|----------------------|-------------------|--------------------|--------------------------|
| WIDTH | VERTICAL REPEAT | HORIZONTAL REPEAT | CONTENT |
| 58.00 in (147.32 cm) | 0.00 in (0.00 cm) | 7.75 in (19.68 cm) | 50% Polyester, 50% Linen |
| BACKING | PRODUCT NUMBER | COUNTRY | CLEANING CODES |
| | 1006402 | Turkey | S |