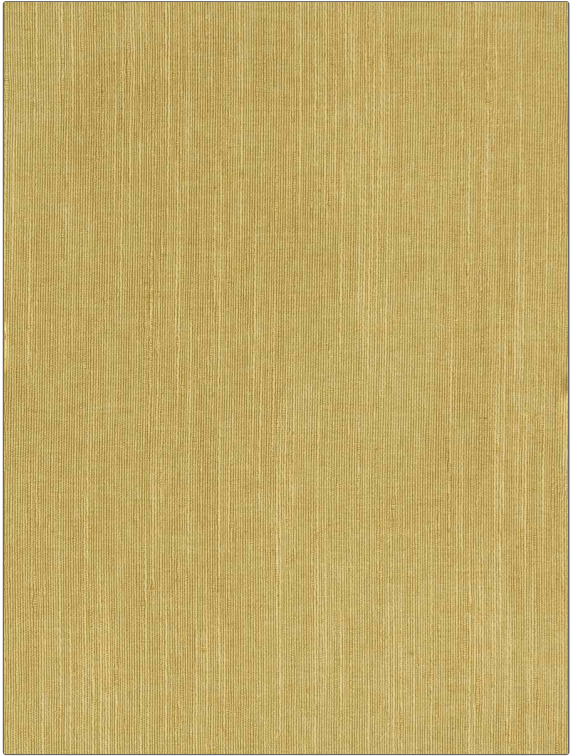


PATTERN Glasgow
COLOR Honey

BRAND	APPLICATION
Fabricut	Fabric
USES	CATEGORIES
Bedding, Drapery	NFPA 701 FR, Solids / Small Scale Patterns, Faux Silk, Eco / Environment Plus
BOOK	COLORS
Veranda	Yellow
DESIGN TYPES	DIRECTION SHOWN
Solid	Railroaded



WIDTH	VERTICAL REPEAT	HORIZONTAL REPEAT	CONTENT
119.00 in (302.26 cm)	0.00 in (0.00 cm)	0.00 in (0.00 cm)	100% Polyester
BACKING	FIRE CODES	PRODUCT NUMBER	DATE BOOKED
	Passes "NFPA 701" 2010	1247321	02/2020
COUNTRY	CLEANING CODES		
India	S		

ADDITIONAL PRODUCT NOTES

Oeko Tex Standard 100, Iso 14001, Shown Railroaded, Exclusive Pattern, Eco / Environment Plus