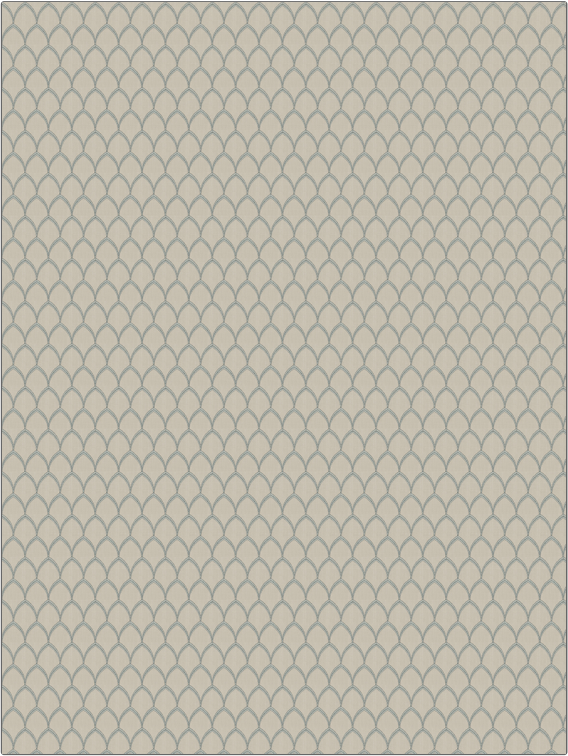


PATTERN	Parthy
COLOR	Fieldstone

BRAND	APPLICATION
Fabricut	Fabric
USES	CATEGORIES
Bedding, Drapery	Crewels / Embroideries
BOOK	COLORS
Natural Layers (3 Books) Dew	Linen
DESIGN TYPES	SCALE
Embroidery, Lattice / Fretwork, Contemporary / Modern	Medium
RAILOADED	
Not Railroaded	



WIDTH	VERTICAL REPEAT	HORIZONTAL REPEAT	CONTENT
51.00 in (129.54 cm)	3.00 in (7.62 cm)	1.12 in (2.84 cm)	Embroidery: 100% Polyester, Base: 52% Polyester, 48% Cotton
BACKING	PRODUCT NUMBER	DATE BOOKED	COUNTRY
	1263402	02/2020	India
CLEANING CODES			
S			

ADDITIONAL PRODUCT NOTES
Exclusive Pattern, Embroidered Textiles Are Not, Guaranteed For Precise Color, Matching And Colorfastness., Color Placement Of Embroidery, May Vary. All Measurements, Quoted For Repeats Are, Approximate.