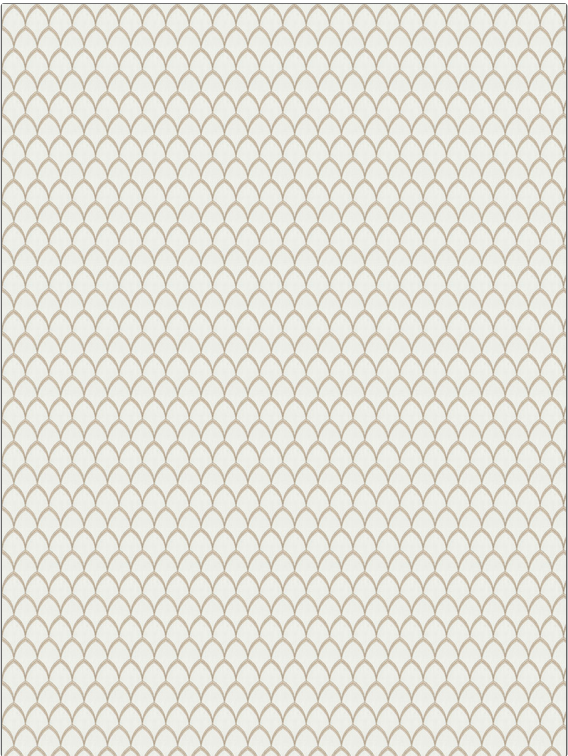


| | |
|---------|--------|
| PATTERN | Parthy |
| COLOR | Fawn |

| | |
|---|--------------------------------|
| BRAND | APPLICATION |
| Fabricut | Fabric |
| USES | CATEGORIES |
| Bedding, Drapery | Crewels / Embroideries |
| BOOK | COLORS |
| Natural Layers (3 Books) Driftwood | Taupe / Tan, Off White / Ivory |
| DESIGN TYPES | SCALE |
| Embroidery, Lattice / Fretwork, Contemporary / Modern | Medium |
| RAILROADED | |
| Not Railroaded | |



| | | | |
|----------------------|-------------------|-------------------|---|
| WIDTH | VERTICAL REPEAT | HORIZONTAL REPEAT | CONTENT |
| 51.00 in (129.54 cm) | 3.00 in (7.62 cm) | 1.12 in (2.84 cm) | Embroidery: 100% Polyester, Base: 52% Polyester, 48% Cotton |
| BACKING | PRODUCT NUMBER | DATE BOOKED | COUNTRY |
| | 1263403 | 02/2020 | India |
| CLEANING CODES | | | |
| S | | | |

| |
|---|
| ADDITIONAL PRODUCT NOTES |
| Exclusive Pattern, Embroidered Textiles Are Not, Guaranteed For Precise Color, Matching And Colorfastness., Color Placement Of Embroidery, May Vary. All Measurements, Quoted For Repeats Are, Approximate. |