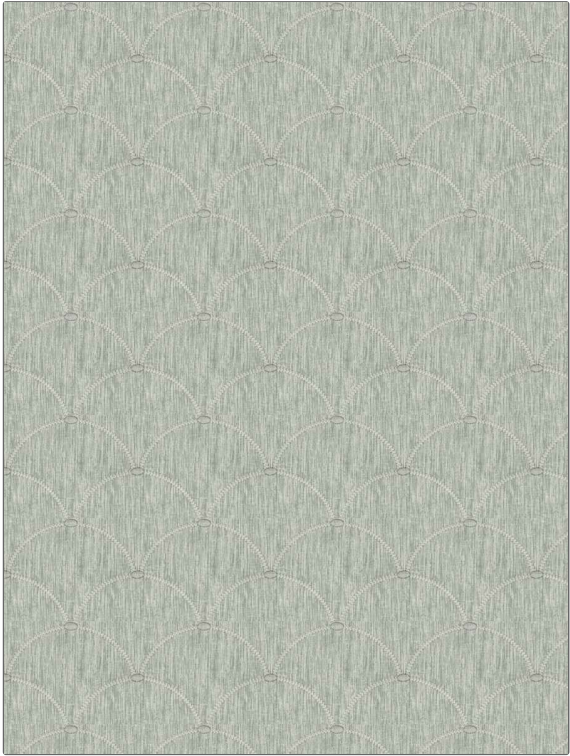


**PATTERN** Rashnu  
**COLOR** 02

<b>BRAND</b>	<b>APPLICATION</b>
Fabricut	Fabric
<b>USES</b>	<b>CATEGORIES</b>
Bedding, Drapery	Prints
<b>COLORS</b>	<b>DESIGN TYPES</b>
Light Blue	Embroidery, Print Pattern, Contemporary / Modern, Bargello
<b>SCALE</b>	<b>RAILROADED</b>
Medium	Not Railroaded



<b>WIDTH</b>	<b>VERTICAL REPEAT</b>	<b>HORIZONTAL REPEAT</b>	<b>CONTENT</b>
51.00 in (129.54 cm)	5.25 in (13.34 cm)	6.37 in (16.18 cm)	Embroidery: 100% Rayon, Base: 70% Cotton, 25% Polyester, 5% Linen
<b>BACKING</b>	<b>PRODUCT NUMBER</b>	<b>COUNTRY</b>	<b>CLEANING CODES</b>
	1306102	India	S

**ADDITIONAL PRODUCT NOTES**

Embroidered Textiles Are Not, Guaranteed For Precise Color, Matching And Colorfastness., Color Placement Of Embroidery, May Vary. All Measurements, Quoted For Repeats Are, Approximate.