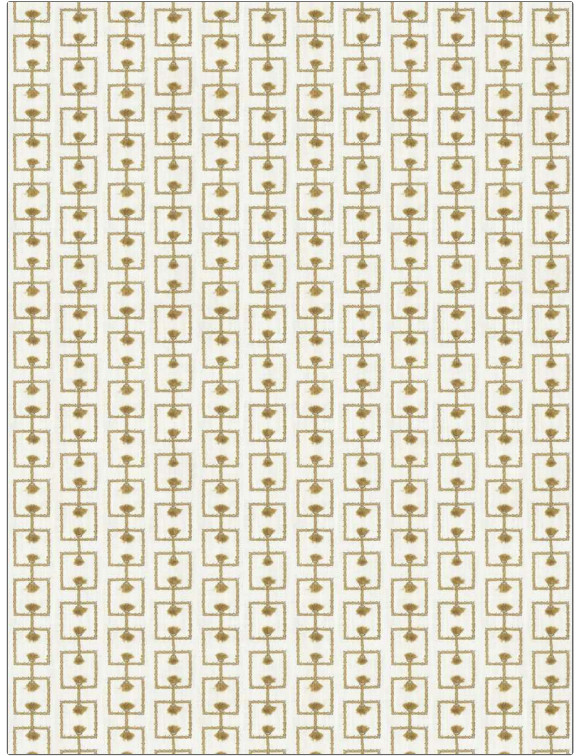


**PATTERN** **Ettie Box**  
**COLOR** **02**

<b>BRAND</b>	<b>APPLICATION</b>
<b>Fabricut</b>	<b>Fabric</b>
<b>USES</b>	<b>CATEGORIES</b>
<b>Bedding, Drapery</b>	<b>Crewels / Embroideries</b>
<b>COLORS</b>	<b>DESIGN TYPES</b>
<b>Gold</b>	<b>Embroidery, Geometric, Contemporary / Modern</b>
<b>SCALE</b>	<b>RAILROADED</b>
<b>Small</b>	<b>Not Railroaded</b>



<b>WIDTH</b>	<b>VERTICAL REPEAT</b>	<b>HORIZONTAL REPEAT</b>	<b>CONTENT</b>
<b>53.00 in (134.62 cm)</b>	<b>2.36 in (5.99 cm)</b>	<b>4.52 in (11.48 cm)</b>	<b>Embroidery: 79% Cotton, 21% Viscose, Base: 52% Cotton, 48% Polyester</b>
<b>BACKING</b>	<b>FIRE CODES</b>	<b>PRODUCT NUMBER</b>	<b>COUNTRY</b>
	<b>UFAC Class I</b>	<b>1441202</b>	<b>India</b>
<b>CLEANING CODES</b>			
<b>S</b>			

**ADDITIONAL PRODUCT NOTES**

**Ca Tb 117-2013, Embroidered Textiles Are Not, Guaranteed For Precise Color, Matching And Colorfastness., Color Placement Of Embroidery, May Vary. All Measurements, Quoted For Repeats Are, Approximate.**