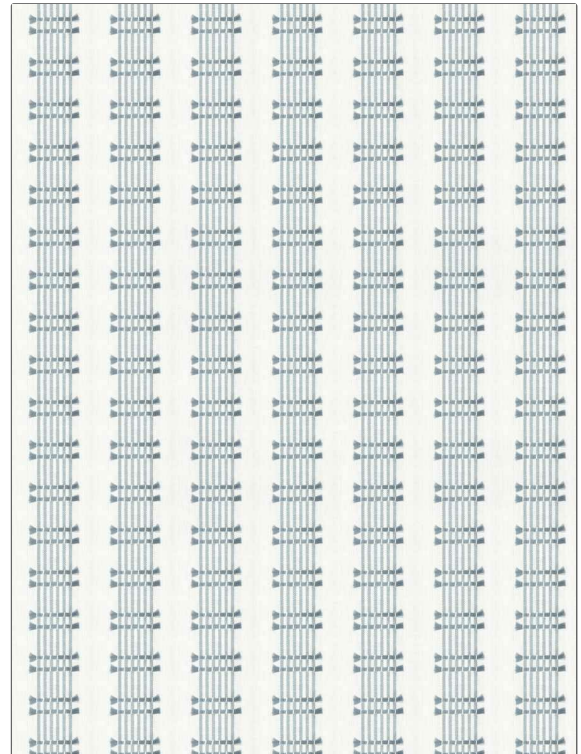


PATTERN Loxley
COLOR 03

BRAND	APPLICATION
Fabricut	Fabric
USES	CATEGORIES
Bedding, Drapery	Wovens, Crewels / Embroideries
COLORS	DESIGN TYPES
Light Blue	Embroidery, Stripes
SCALE	RAILOADED
Medium	Not Railed



WIDTH	VERTICAL REPEAT	HORIZONTAL REPEAT	CONTENT
54.00 in (137.16 cm)	2.13 in (5.41 cm)	3.88 in (9.86 cm)	Embroidery: 100% Cotton, Base: 81% Cotton, 19% Polyester
BACKING	FIRE CODES	PRODUCT NUMBER	COUNTRY
	Does Not Contain FR Chemicals, UFAC Class I / NFPA 260	1446603	India
CLEANING CODES			
S			

ADDITIONAL PRODUCT NOTES

Ca Tb 117-2013, Embroidered Textiles Are Not, Guaranteed For Precise Color, Matching And Colorfastness., Color Placement Of Embroidery, May Vary. All Measurements, Quoted For Repeats Are, Approximate.