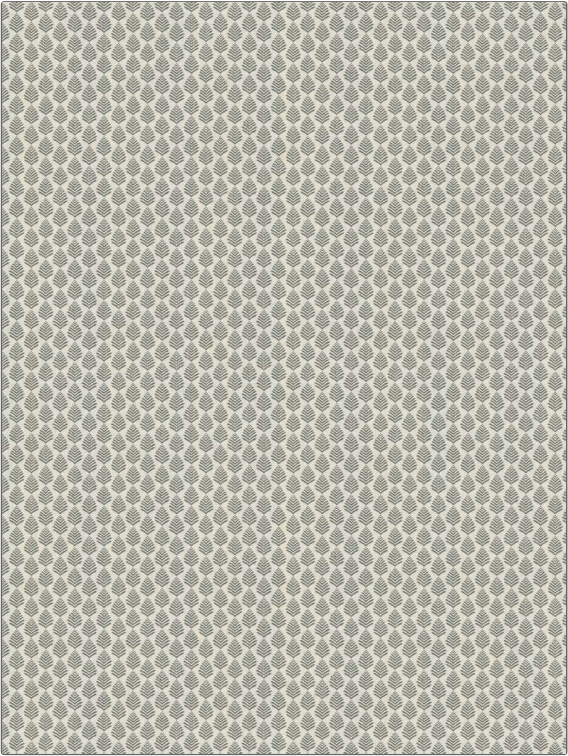


PATTERN	Sitara
COLOR	Slate

BRAND	APPLICATION
Fabricut	Fabric
USES	CATEGORIES
Bedding, Drapery, Multipurpose, Upholstery	Wovens, Solids / Small Scale Patterns
BOOK	COLORS
Natural Nuances (5 Books) Driftwood	Grey
DESIGN TYPES	SCALE
Leaves, Small Scale Woven	Small
RAILROADED	
Not Railroaded	



WIDTH	VERTICAL REPEAT	HORIZONTAL REPEAT	CONTENT
54.00 in (137.16 cm)	1.00 in (2.54 cm)	1.38 in (3.51 cm)	65% Polyester, 35% Cotton
BACKING	FIRE CODES	DOUBLE RUBS	PRODUCT NUMBER
	UFAC Class I, Does Not Contain FR Chemicals	Exceeds 50,000 Double Rubs (Wyzenbeek Method)	1447501
DATE BOOKED	COUNTRY	CLEANING CODES	
01/2024	India	S	

ADDITIONAL PRODUCT NOTES
Ca Tb 117-2013, Embroidered Textiles Are Not, Guaranteed For Precise Color, Matching And Colorfastness., Color Placement Of Embroidery, May Vary. All Measurements, Quoted For Repeats Are, Approximate.