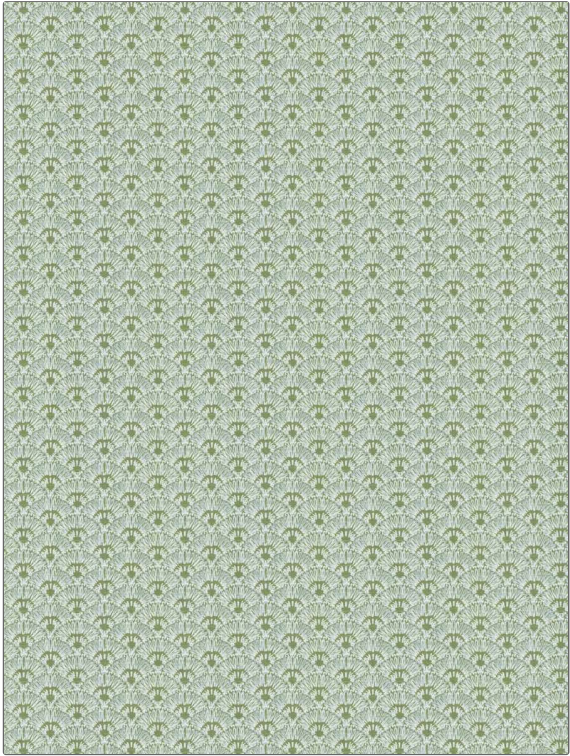


PATTERN Eulla
COLOR 02

| | |
|---------------------------------------|--------------------------------|
| BRAND | APPLICATION |
| Fabricut | Fabric |
| USES | CATEGORIES |
| Bedding, Drapery, Multipurpose | Prints |
| COLORS | DESIGN TYPES |
| Light Green | Print Pattern, Bargello |
| SCALE | RAILROADED |
| Small | Not Railroaded |



| | | | |
|-----------------------------|--------------------------|---|-----------------------|
| WIDTH | VERTICAL REPEAT | HORIZONTAL REPEAT | CONTENT |
| 54.00 in (137.16 cm) | 1.68 in (4.27 cm) | 3.86 in (9.80 cm) | 100% Cotton |
| BACKING | FIRE CODES | DOUBLE RUBS | PRODUCT NUMBER |
| | UFAC Class I | Exceeds 9,000 Double Rubs (Wyzenbeek Method) | 1460002 |
| COUNTRY | CLEANING CODES | | |
| USA | S | | |