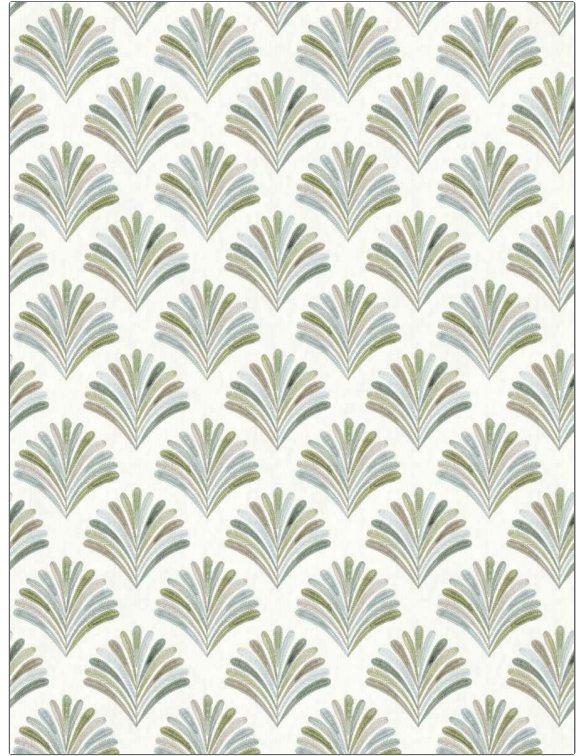


PATTERN Fanery
COLOR 02

BRAND	APPLICATION
Fabricut	Fabric
USES	CATEGORIES
Bedding, Drapery	Crewels / Embroideries
COLORS	DESIGN TYPES
Aqua / Teal, Light Green	Embroidery, Medallion, Bargello
SCALE	RAILROADED
Medium	Not Railroaded



WIDTH	VERTICAL REPEAT	HORIZONTAL REPEAT	CONTENT
52.00 in (132.08 cm)	6.50 in (16.51 cm)	6.75 in (17.14 cm)	Embroidery: 100% Polyester, Base: 50% Polyester, 50% Cotton
BACKING	FIRE CODES	PRODUCT NUMBER	COUNTRY
	UFAC Class I	1465602	India
CLEANING CODES			
S			

ADDITIONAL PRODUCT NOTES

Ca Tb 117-2013, Embroidered Textiles Are Not, Guaranteed For Precise Color, Matching And Colorfastness., Color Placement Of Embroidery, May Vary. All Measurements, Quoted For Repeats Are, Approximate.