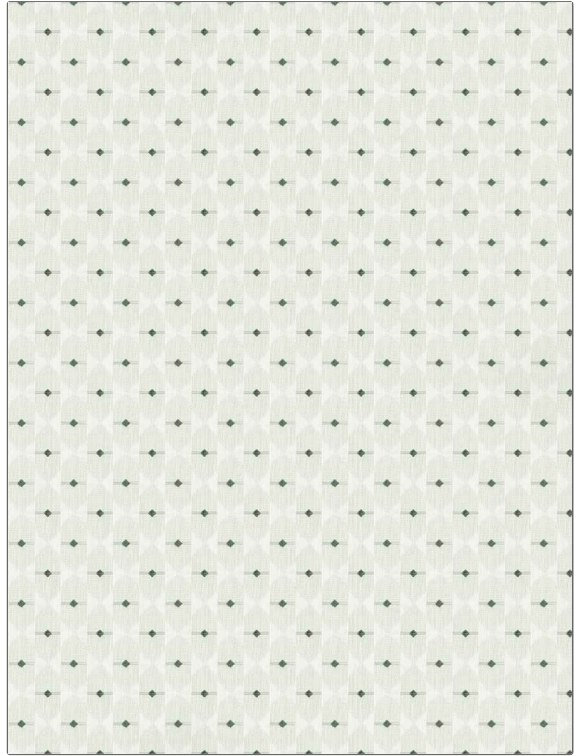


PATTERN Andaz
COLOR Loden

BRAND	APPLICATION
Fabricut	Fabric
USES	CATEGORIES
Bedding, Drapery	Crewels / Embroideries
BOOK	COLORS
Natural Nuances (5 Books) Willow	Green
DESIGN TYPES	SCALE
Embroidery, Geometric, Contemporary / Modern, Diamond	Small
RAILROADED	
Not Railroaded	



WIDTH	VERTICAL REPEAT	HORIZONTAL REPEAT	CONTENT
52.00 in (132.08 cm)	3.13 in (7.95 cm)	4.00 in (10.16 cm)	Embroidery: 100% Viscose, Base: 75% Cotton, 25% Polyester
BACKING	FIRE CODES	PRODUCT NUMBER	DATE BOOKED
	UFAC Class I	1466101	01/2024
COUNTRY	CLEANING CODES		
India	S		

ADDITIONAL PRODUCT NOTES

Ca Tb 117-2013, Embroidered Textiles Are Not, Guaranteed For Precise Color, Matching And Colorfastness., Color Placement Of Embroidery, May Vary. All Measurements, Quoted For Repeats Are, Approximate.