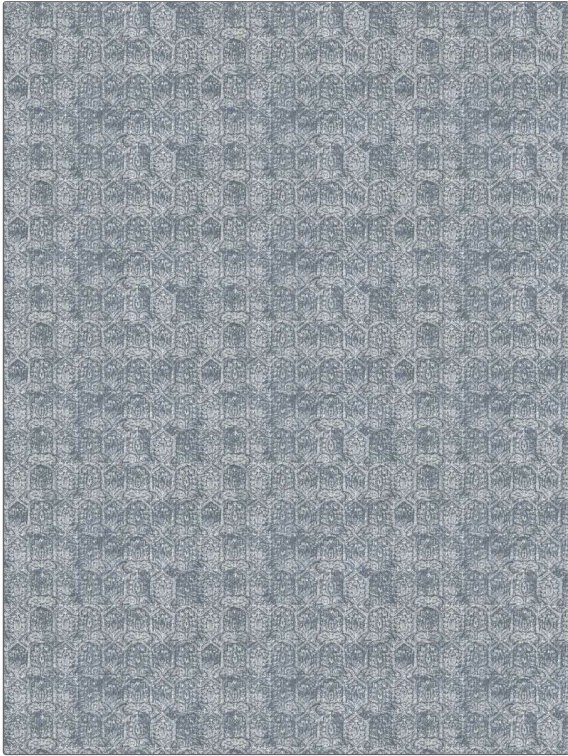


PATTERN	Adolin
COLOR	Chambray

BRAND	APPLICATION
Fabricut	Fabric
USES	CATEGORIES
Bedding, Drapery, Multipurpose	Prints
BOOK	COLORS
Natural Nuances (5 Books) Chambray	Blue
DESIGN TYPES	RAILROADED
Global / Ethnic, Print Pattern	Not Railroaded



WIDTH	VERTICAL REPEAT	HORIZONTAL REPEAT	CONTENT
55.00 in (139.70 cm)	13.50 in (34.29 cm)	18.50 in (46.99 cm)	50% Cotton, 35% Viscose, 15% Linen
BACKING	FIRE CODES	DOUBLE RUBS	PRODUCT NUMBER
	Passes NFPA 260	Exceeds 6,000 Double Rubs (Wyzenbeek Method)	1468301
DATE BOOKED	COUNTRY	CLEANING CODES	
01/2024	India	S	

ADDITIONAL PRODUCT NOTES
Ca Tb 117-2013