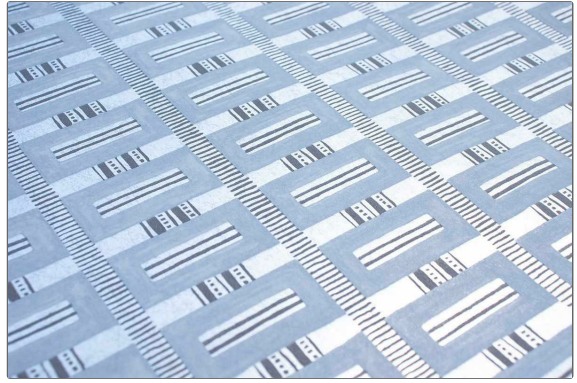


PATTERN Mamounia WP
COLOR Twinkle



BRAND

The Vale London

APPLICATION

Wallcovering

CATEGORIES

Non - Woven, ASTM-E84, Wallpaper, En 15102, Prints

BOOK

The Hyde Collection

COLORS

Light Blue

DESIGN TYPES

Geometric / Abstract, Stripes

SCALE

Medium

WIDTH

27.00 in (68.58 cm)

VERTICAL REPEAT

6.30 in (16.00 cm)

HORIZONTAL REPEAT

27.00 in (68.58 cm)

CONTENT

48% Cellulose, 30% Mineral Filler, 15% Binder, 7% Polyester

BACKING

Pretrimmed

FIRE CODES

Passes ASTM-E84, Ce Mark Certified, Passes EN15102

PRODUCT NUMBER

1522404

DATE BOOKED

02/2023

COUNTRY

England

ADDITIONAL PRODUCT NOTES

Pretrimmed, Lead Free, Paste The Wall, Ce Mark Certified, Passes EN15102, Straight / Side Match, Nonwoven Paper, Peelable, Spongeable