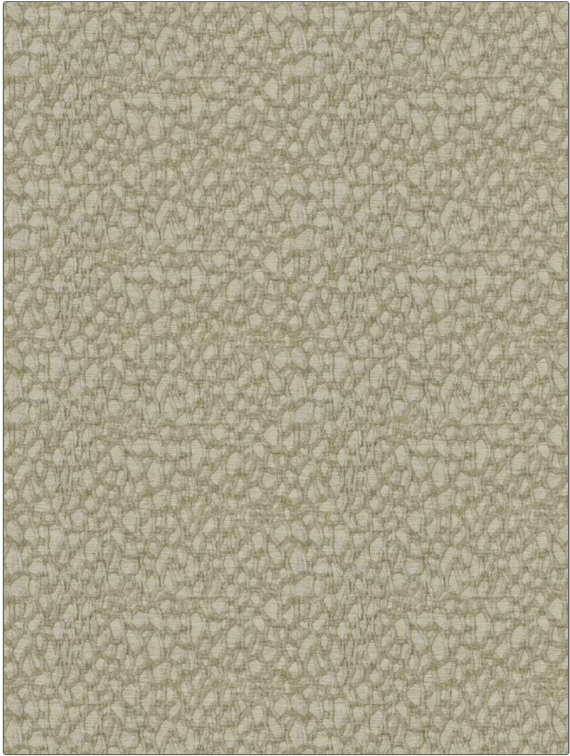


PATTERN Hayes
COLOR 04

BRAND	APPLICATION
Fabricut	Fabric
USES	CATEGORIES
Upholstery	Wovens, Chenille
COLORS	DESIGN TYPES
Taupe / Tan, Linen	Contemporary / Modern, Abstract
SCALE	RAILROADED
Small	Not Railroaded



WIDTH	VERTICAL REPEAT	HORIZONTAL REPEAT	CONTENT
54.00 in (137.16 cm)	8.33 in (21.16 cm)	13.63 in (34.62 cm)	100% Polyester
BACKING	FIRE CODES	DOUBLE RUBS	PRODUCT NUMBER
	UFAC Class I / NFPA 260	Exceeds 36,000 Double Rubs (Wyzenbeek Method)	1560604
COUNTRY	CLEANING CODES		
India	S		

ADDITIONAL PRODUCT NOTES

Passes 35,000 Martindale Tst, Ca Tb 117-2013, Exclusive Pattern