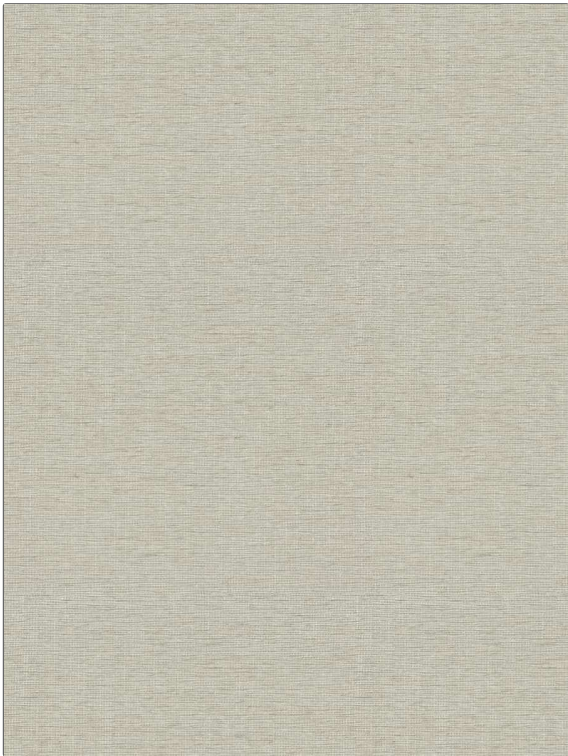


**PATTERN** Emmanuel  
**COLOR** Natural

<b>BRAND</b>	<b>APPLICATION</b>
Fabricut	Fabric
<b>USES</b>	<b>CATEGORIES</b>
Bedding, Upholstery	Wovens, Chenille
<b>BOOK</b>	<b>COLORS</b>
Kendall Wilkinson Vignettes (3 Books) Crystal / Spring	Beige, Linen
<b>DESIGN TYPES</b>	<b>RAILROADED</b>
Texture Plain	Not Railroaded



<b>WIDTH</b>	<b>VERTICAL REPEAT</b>	<b>HORIZONTAL REPEAT</b>	<b>CONTENT</b>
54.00 in (137.16 cm)	0.00 in (0.00 cm)	0.00 in (0.00 cm)	83% Polyester, 10% Cotton, 5% Linen, 2% Viscose
<b>BACKING</b>	<b>FIRE CODES</b>	<b>DOUBLE RUBS</b>	<b>PRODUCT NUMBER</b>
	UFAC Class I / NFPA 260	Exceeds 51,000 Double Rubs (Wyzenbeek Method)	1561201
<b>DATE BOOKED</b>	<b>COUNTRY</b>	<b>CLEANING CODES</b>	
05/2024	India	S	

**ADDITIONAL PRODUCT NOTES**

Passes 40,000 Martindale Tst, Ca Tb 117-2013, Exclusive Pattern