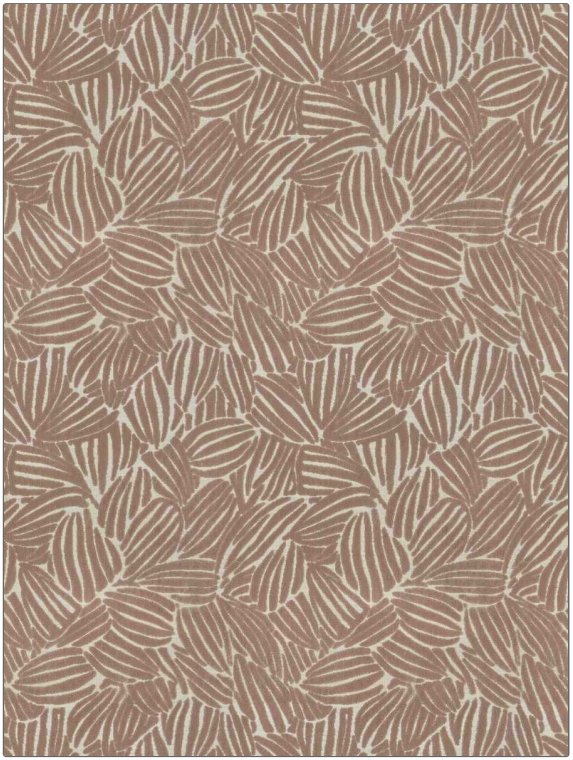


**PATTERN** Katherine Velvet  
**COLOR** Daybreak

<b>BRAND</b>	<b>APPLICATION</b>
Fabricut	Fabric
<b>USES</b>	<b>CATEGORIES</b>
Upholstery	Velvet / Grospoint
<b>BOOK</b>	<b>COLORS</b>
Kendall Wilkinson Vignettes (3 Books) Daybreak	Pink
<b>DESIGN TYPES</b>	<b>SCALE</b>
Leaves, Contemporary / Modern, Abstract	Medium
<b>RAILROADED</b>	
Not Railroaded	



<b>WIDTH</b>	<b>VERTICAL REPEAT</b>	<b>HORIZONTAL REPEAT</b>	<b>CONTENT</b>
55.00 in (139.70 cm)	17.72 in (45.01 cm)	13.78 in (35.00 cm)	55% Viscose, 45% Polyester
<b>BACKING</b>	<b>FIRE CODES</b>	<b>DOUBLE RUBS</b>	<b>PRODUCT NUMBER</b>
	UFAC Class I / NFPA 260	Exceeds 36,000 Double Rubs (Wyzenbeek Method)	1562105
<b>DATE BOOKED</b>	<b>COUNTRY</b>	<b>CLEANING CODES</b>	
05/2024	India	S	

**ADDITIONAL PRODUCT NOTES**  
 Passes 40,000 Martindale Tst, Ca Tb 117-2013, Exclusive Pattern