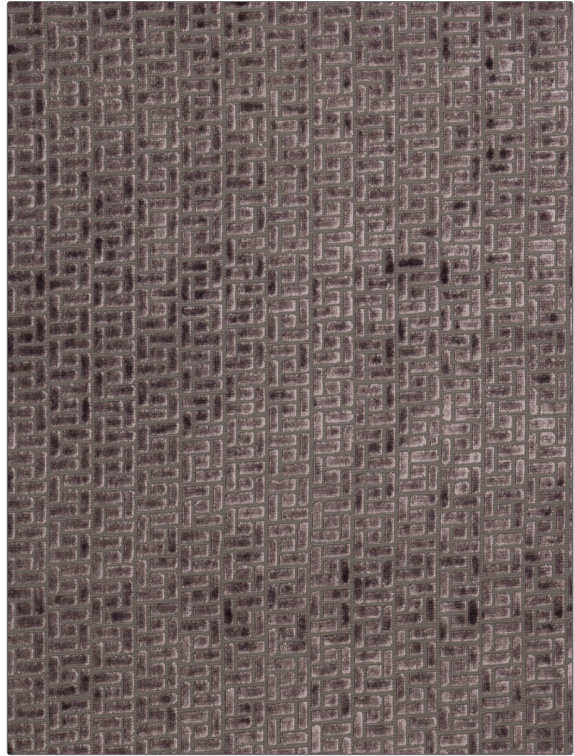


# Fabric Product Details

<b>PATTERN</b>	<b>Bari</b>
<b>COLOR</b>	<b>Plum</b>

<b>BRAND</b>	<b>APPLICATION</b>
<b>Fabricut</b>	<b>Fabric</b>
<b>USES</b>	<b>CATEGORIES</b>
<b>Bedding, Drapery, Multipurpose, Upholstery</b>	<b>Velvet / Grospoint, Wovens</b>
<b>COLORS</b>	<b>DESIGN TYPES</b>
<b>Lavender / Purple</b>	<b>Geometric, Jacquard Pattern, Check / Plaid, Contemporary / Modern</b>
<b>SCALE</b>	<b>RAILROADED</b>
<b>Small</b>	<b>Not Railroaded</b>



<b>WIDTH</b>	<b>FINISH</b>	<b>VERTICAL REPEAT</b>	<b>HORIZONTAL REPEAT</b>
<b>54.00 in (137.16 cm)</b>	<b>Soil &amp; Stain Repellent Finish</b>	<b>2.00 in (5.08 cm)</b>	<b>2.00 in (5.08 cm)</b>
<b>CONTENT</b>	<b>BACKING</b>	<b>FIRE CODES</b>	<b>DOUBLE RUBS</b>
<b>53% Rayon, 47% Polyester</b>		<b>UFAC Class I, Passes NFPA 260</b>	<b>Exceeds 35,000 Double Rubs (Wyzenbeek Method)</b>
<b>PRODUCT NUMBER</b>	<b>COUNTRY</b>	<b>CLEANING CODES</b>	
<b>0168804</b>	<b>China</b>	<b>S</b>	

<b>ADDITIONAL PRODUCT NOTES</b>
<b>Soil &amp; Stain Repellent Finish, Ca Tb 117-2013</b>