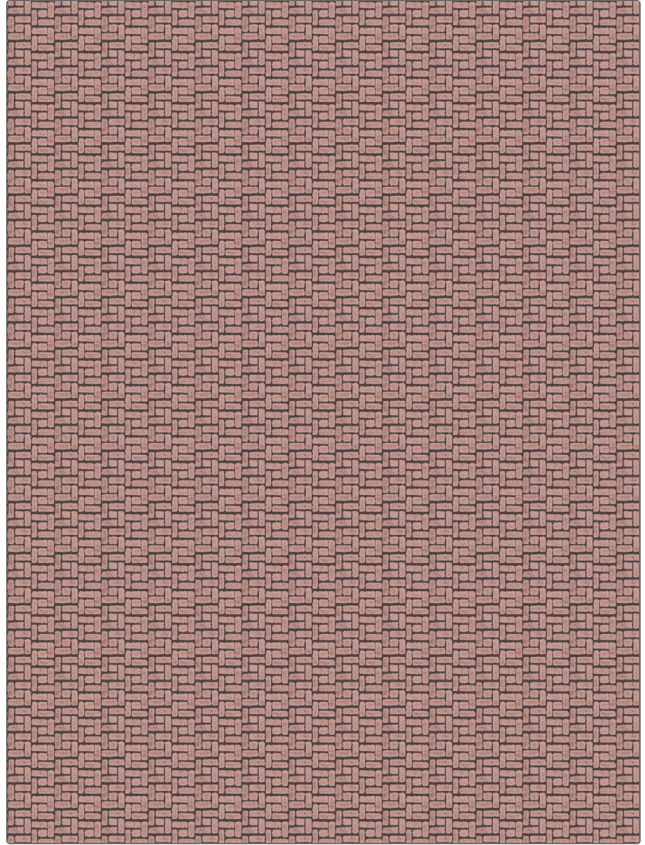


FABRICUT Fabric Product Details

| | |
|---------|-------------|
| PATTERN | Bari |
| COLOR | 09 |

| | |
|---|--|
| BRAND | APPLICATION |
| Fabricut | Fabric |
| USES | CATEGORIES |
| Bedding, Drapery, Multipurpose, Upholstery | Velvet / Grospoint, Wovens |
| COLORS | DESIGN TYPES |
| Lavender / Purple | Geometric, Jacquard Pattern, Check / Plaid, Contemporary / Modern |
| SCALE | RAILROADED |
| Small | Not Railroaded |



| | | | |
|---------------------------------|---|--|--------------------------|
| WIDTH | FINISH | VERTICAL REPEAT | HORIZONTAL REPEAT |
| 54.00 in (137.16 cm) | Soil & Stain Repellent Finish | 2.00 in (5.08 cm) | 2.00 in (5.08 cm) |
| CONTENT | FIRE CODES | DOUBLE RUBS | PRODUCT NUMBER |
| 53% Rayon, 47% Polyester | UFAC Class I, Cal Tb 117-2013, Passes NFPA 260 | Exceeds 35,000 Double Rubs (Wyzenbeek Method) | 0169209 |
| COUNTRY | CLEANING CODES | | |
| China | S | | |

| |
|--|
| ADDITIONAL PRODUCT NOTES |
| Soil & Stain Repellent Finish |