

PATTERN **Future Embroidery**
COLOR **Ponza**

BRAND

Liberty of London

APPLICATION

Fabric

USES

**Bedding, Drapery,
Multipurpose, Upholstery**

CATEGORIES

**Wovens, Crewels /
Embroideries, Linen**

BOOK

LOL Futurliberty

COLORS

Blue, Gold, Aqua / Teal

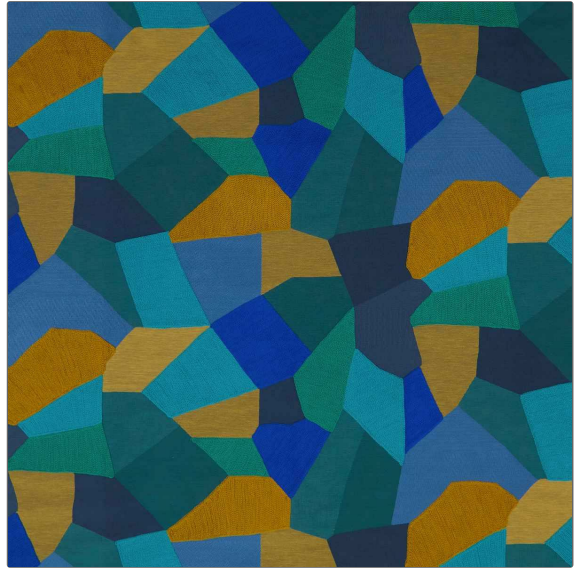
DESIGN TYPES

**Geometric, Contemporary /
Modern**

SCALE

Large

RAILROADED

Not Railroaded

WIDTH

52.00 in (132.08 cm)

VERTICAL REPEAT

20.00 in (50.80 cm)

HORIZONTAL REPEAT

26.50 in (67.31 cm)

CONTENT

**Embroidery: 39% Viscose,
25% Acrylic, 19% Cotton,
13% Linen, 4% Nylon, Base:
52% Viscose, 25% Cotton,
17% Linen**

BACKING

DOUBLE RUBS

**Exceeds 20,000 Double
Rubs**

PRODUCT NUMBER

1780401

DATE BOOKED

08/2023

COUNTRY

Indonesia

CLEANING CODES

S

ADDITIONAL PRODUCT NOTES

Passes 20,000 Martindale Tst