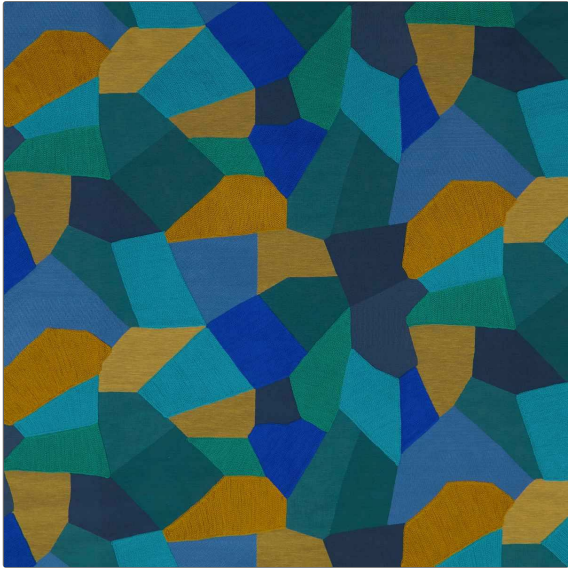


**PATTERN** Future Embroidery  
**COLOR** 01



<b>BRAND</b>	<b>APPLICATION</b>
Liberty of London	Fabric
<b>USES</b>	<b>CATEGORIES</b>
Bedding, Drapery, Multipurpose, Upholstery	Wovens, Crewels / Embroideries, Linen
<b>COLORS</b>	<b>DESIGN TYPES</b>
Blue, Gold, Aqua / Teal	Geometric, Contemporary / Modern
<b>SCALE</b>	<b>RAILROADED</b>
Large	Not Railroaded

<b>WIDTH</b>	<b>VERTICAL REPEAT</b>	<b>HORIZONTAL REPEAT</b>	<b>CONTENT</b>
52.00 in (132.08 cm)	20.00 in (50.80 cm)	26.50 in (67.31 cm)	Embroidery: 39% Viscose, 25% Acrylic, 19% Cotton, 13% Linen, 4% Nylon, Base: 52% Viscose, 25% Cotton, 17% Linen
<b>BACKING</b>	<b>DOUBLE RUBS</b>	<b>PRODUCT NUMBER</b>	<b>COUNTRY</b>
	Exceeds 20,000 Double Rubs	1780501	Indonesia
<b>CLEANING CODES</b>			
S			

**ADDITIONAL PRODUCT NOTES**

Passes 20,000 Martindale Tst