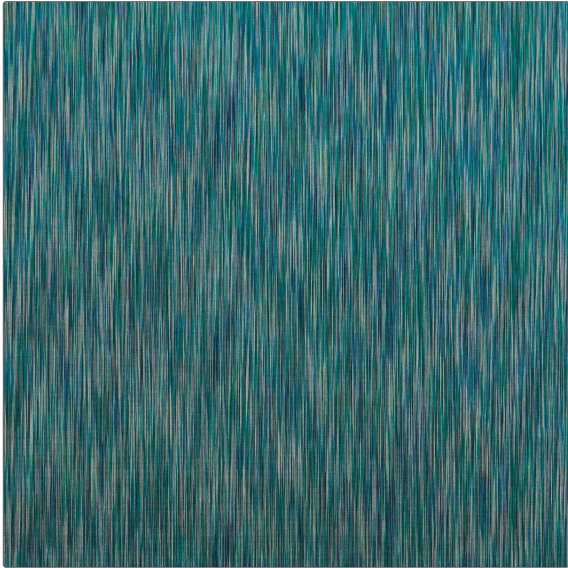


PATTERN Motion Stripe
COLOR 01



BRAND	APPLICATION
Liberty of London	Fabric
USES	CATEGORIES
Bedding, Drapery, Multipurpose, Upholstery	Wovens
COLORS	DESIGN TYPES
Green, Aqua / Teal	Stripes
SCALE	RAILROADED
Small	Not Railroaded

WIDTH	VERTICAL REPEAT	HORIZONTAL REPEAT	CONTENT
54.00 in (137.16 cm)	0.00 in (0.00 cm)	0.00 in (0.00 cm)	61% Viscose, 39% Cotton
BACKING	DOUBLE RUBS	PRODUCT NUMBER	COUNTRY
	Exceeds 80,000 Double Rubs	1781201	Indonesia
CLEANING CODES			
S			

ADDITIONAL PRODUCT NOTES

Passes 80,000 Martindale Tst