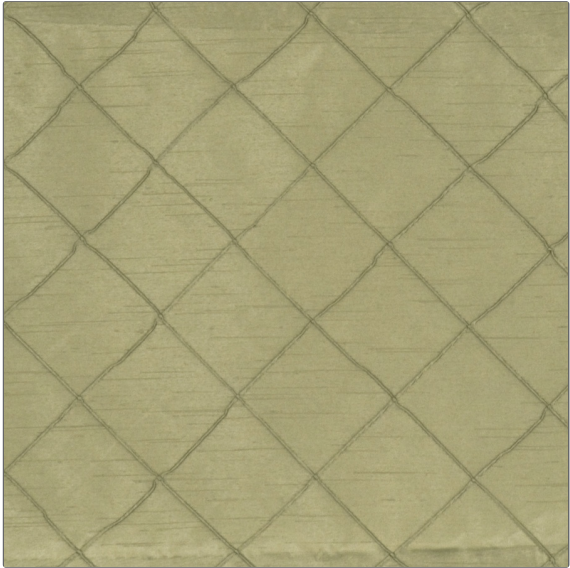


**PATTERN** Minda  
**COLOR** Seafoam



<b>BRAND</b>	<b>APPLICATION</b>
Fabricut	Fabric
<b>USES</b>	<b>CATEGORIES</b>
Bedding, Drapery	NFPA 701 FR, Taffeta, Crewels / Embroideries
<b>COLORS</b>	<b>DESIGN TYPES</b>
Light Green	Embroidery, Diamond
<b>SCALE</b>	<b>RAILROADED</b>
Medium	Not Railroaded

<b>WIDTH</b>	<b>VERTICAL REPEAT</b>	<b>HORIZONTAL REPEAT</b>	<b>CONTENT</b>
54.00 in (137.16 cm)	3.50 in (8.89 cm)	3.50 in (8.89 cm)	100% Polyester
<b>BACKING</b>	<b>FIRE CODES</b>	<b>DOUBLE RUBS</b>	<b>PRODUCT NUMBER</b>
	UFAC Class I, Passes "NFPA 701" 2004, Passes NFPA 260	Exceeds 36,000 Double Rubs (Wyzenbeek Method)	1787639
<b>COUNTRY</b>	<b>CLEANING CODES</b>		
Japan	S		

**ADDITIONAL PRODUCT NOTES**

Exclusive Pattern