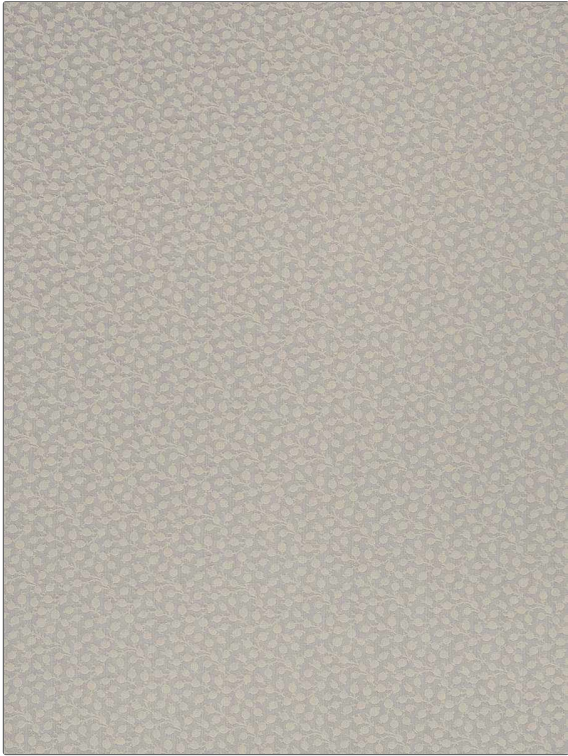


**PATTERN** Adelaide  
**COLOR** Gray

<b>BRAND</b>	<b>APPLICATION</b>
Fabricut	Fabric
<b>USES</b>	<b>CATEGORIES</b>
Bedding, Drapery, Multipurpose, Upholstery	Wovens, Solids / Small Scale Patterns
<b>COLORS</b>	<b>DESIGN TYPES</b>
Grey	Floral, Small Scale Woven, Scrollwork
<b>SCALE</b>	<b>RAILROADED</b>
Small	Not Railroaded



<b>WIDTH</b>	<b>VERTICAL REPEAT</b>	<b>HORIZONTAL REPEAT</b>	<b>CONTENT</b>
54.00 in (137.16 cm)	6.70 in (17.02 cm)	3.30 in (8.38 cm)	100% Cotton
<b>BACKING</b>	<b>FIRE CODES</b>	<b>DOUBLE RUBS</b>	<b>PRODUCT NUMBER</b>
	UFAC Class I, Passes NFPA 260	Exceeds 25,000 Double Rubs (Wyzenbeek Method)	1810204
<b>COUNTRY</b>	<b>CLEANING CODES</b>		
China	S		

**ADDITIONAL PRODUCT NOTES**

Exclusive Pattern, Sand Washed