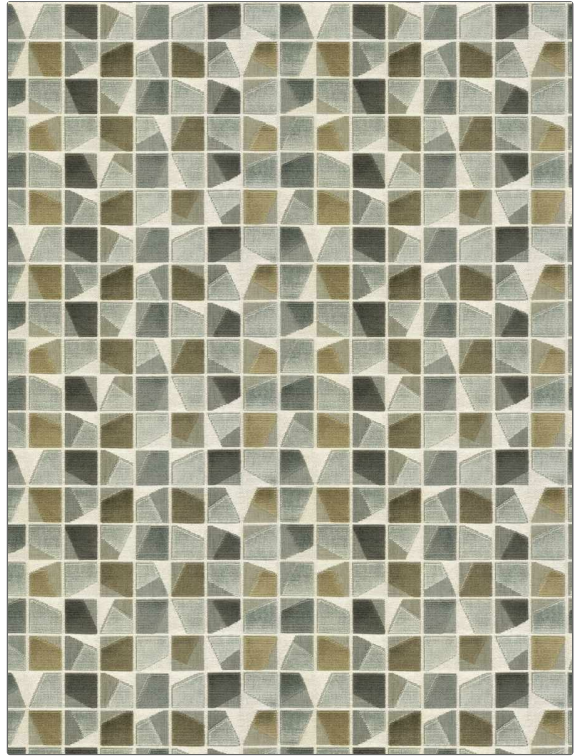


**PATTERN** Shattered Box  
**COLOR** 01

<b>BRAND</b>	<b>APPLICATION</b>
Fabricut	Fabric
<b>USES</b>	<b>CATEGORIES</b>
Upholstery	Velvet / Grospoint, Wovens
<b>COLORS</b>	<b>DESIGN TYPES</b>
Grey	Geometric, Contemporary / Modern
<b>SCALE</b>	<b>RAILOADED</b>
Medium	Not Railed



<b>WIDTH</b>	<b>VERTICAL REPEAT</b>	<b>HORIZONTAL REPEAT</b>	<b>CONTENT</b>
54.00 in (137.16 cm)	10.78 in (27.38 cm)	13.78 in (35.00 cm)	49% Viscose, 49% Polyester, 2% Cotton
<b>BACKING</b>	<b>FIRE CODES</b>	<b>DOUBLE RUBS</b>	<b>PRODUCT NUMBER</b>
	UFAC Class I / NFPA 260	Exceeds 30,000 Double Rubs (Wyzenbeek Method)	1837001
<b>COUNTRY</b>	<b>CLEANING CODES</b>		
Belgium	S		

**ADDITIONAL PRODUCT NOTES**

Passes 35,000 Martindale Tst, Ca Tb 117-2013, Exclusive Pattern