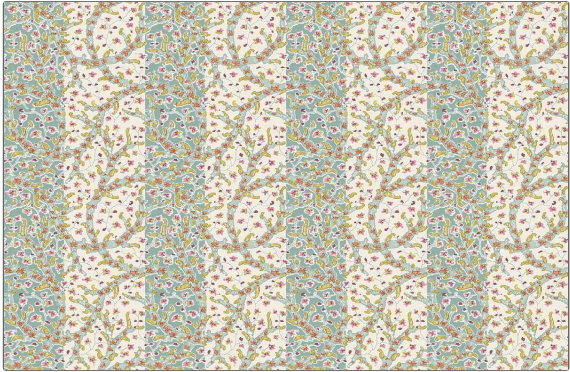


PATTERN Demelza
COLOR Julep



BRAND	APPLICATION
Jean Monro	Fabric
USES	CATEGORIES
Bedding, Drapery, Multipurpose, Upholstery	Prints
BOOK	COLORS
Jean Monro Essentials Collection	Gold, Aqua / Teal, Red
DESIGN TYPES	SCALE
Floral, Print Pattern	Medium
RAILROADED	
Not Railroaded	

WIDTH	VERTICAL REPEAT	HORIZONTAL REPEAT	CONTENT
54.00 in (137.16 cm)	8.80 in (22.35 cm)	6.75 in (17.14 cm)	100% Cotton
BACKING	PRODUCT NUMBER	DATE BOOKED	COUNTRY
	1839401	10/2023	United Kingdom
CLEANING CODES			
S			