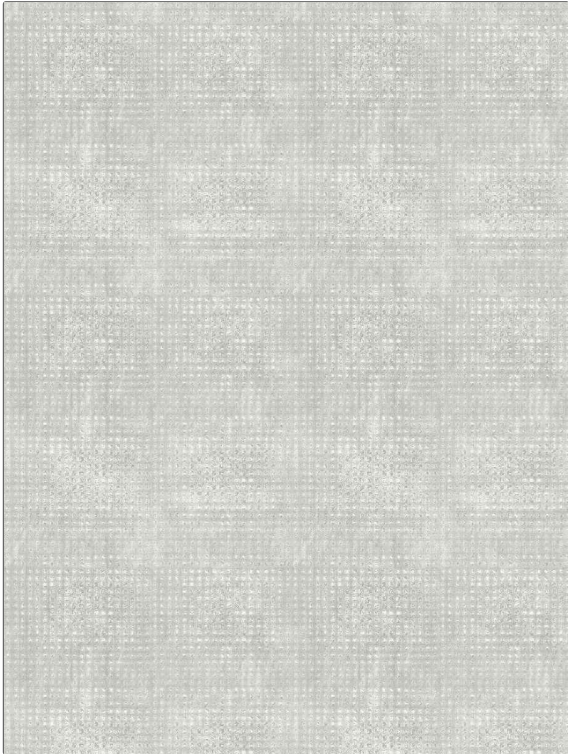


PATTERN Down Under Velvet
COLOR Moon

BRAND	APPLICATION
Fabricut	Fabric
USES	CATEGORIES
Bedding, Upholstery	Velvet / Grospoint, Solids / Small Scale Patterns
BOOK	COLORS
Modern Home (4 Books) Moon Storm	Grey, Linen
DESIGN TYPES	SCALE
Contemporary / Modern, Dots / Circles	Small
RAILROADED	
Not Railroaded	



WIDTH	VERTICAL REPEAT	HORIZONTAL REPEAT	CONTENT
55.00 in (139.70 cm)	13.38 in (33.99 cm)	6.50 in (16.51 cm)	55% Viscose, 45% Polyester
BACKING	FIRE CODES	DOUBLE RUBS	PRODUCT NUMBER
	UFAC Class I / NFPA 260	Exceeds 36,000 Double Rubs (Wyzenbeek Method)	1860604
DATE BOOKED	COUNTRY	CLEANING CODES	
07/2024	India	S	

ADDITIONAL PRODUCT NOTES

Passes 35,000 Martindale Tst, Ca Tb 117-2013, Exclusive Pattern