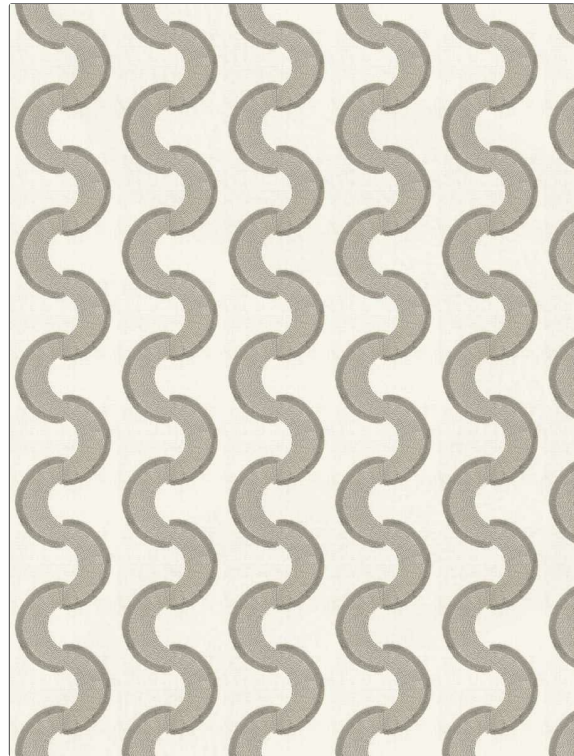


PATTERN	Snake Stitch
COLOR	Moon
BRAND	APPLICATION
Fabricut	Fabric
USES	CATEGORIES
Bedding, Drapery	Crewels / Embroideries
BOOK	COLORS
Modern Home (4 Books) Moon Storm	Linen
DESIGN TYPES	SCALE
Embroidery, Contemporary / Modern	Large
RAILROADED	
Not Railroaded	



WIDTH	VERTICAL REPEAT	HORIZONTAL REPEAT	CONTENT
56.00 in (142.24 cm)	6.10 in (15.49 cm)	5.11 in (12.98 cm)	40% Linen, 35% Viscose, 25% Cotton
BACKING	FIRE CODES	DOUBLE RUBS	PRODUCT NUMBER
	UFAC Class I / NFPA 260	Exceeds 15,000 Double Rubs	1863201
DATE BOOKED	COUNTRY	CLEANING CODES	
07/2024	India	SW	

ADDITIONAL PRODUCT NOTES

Passes 15,000 Martindale Tst, Ca Tb 117-2013, Exclusive Pattern, Embroidered Textiles Are Not, Guaranteed For Precise Color, Matching And Colorfastness., Color Placement Of Embroidery, May Vary. All Measurements, Quoted For Repeats Are, Approximate.