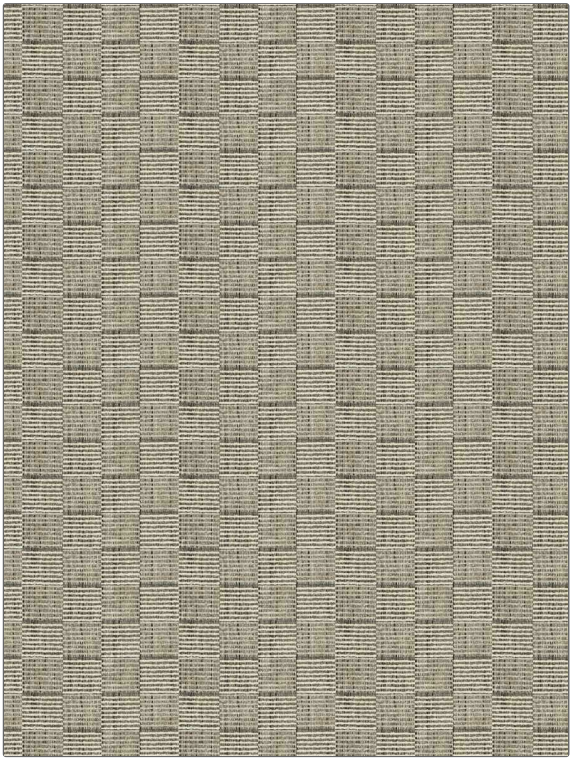


PATTERN Line By Line
COLOR Dune

BRAND	APPLICATION
Fabricut	Fabric
USES	CATEGORIES
Bedding, Drapery, Multipurpose, Upholstery	Wovens
BOOK	COLORS
Modern Home (4 Books) Moon Storm	Black, Linen
DESIGN TYPES	SCALE
Geometric, Small Scale Woven, Check / Plaid, Abstract	Medium
RAILROADED	
Not Railroaded	



WIDTH	VERTICAL REPEAT	HORIZONTAL REPEAT	CONTENT
56.00 in (142.24 cm)	3.50 in (8.89 cm)	3.75 in (9.52 cm)	100% Polyester
BACKING	FIRE CODES	DOUBLE RUBS	PRODUCT NUMBER
	UFAC Class I / NFPA 260	Exceeds 30,000 Double Rubs (Wyzenbeek Method)	1866401
DATE BOOKED	COUNTRY	CLEANING CODES	
07/2024	India	S	

ADDITIONAL PRODUCT NOTES

Ca Tb 117-2013, Exclusive Pattern