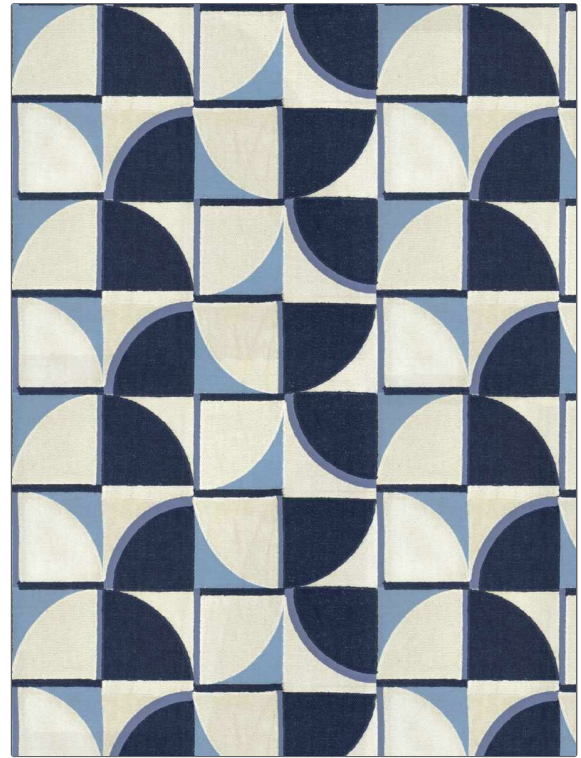


**PATTERN** Shape Of You  
**COLOR** 03

|                     |  |
|---------------------|--|
| <b>BRAND</b>        | <b>APPLICATION</b>   |
| Fabricut            | Fabric   |
| <b>USES</b>         | <b>CATEGORIES</b>  |
| Bedding, Upholstery | Crewels / Embroideries   |
| <b>COLORS</b>       | <b>DESIGN TYPES</b>  |
| Blue, Navy          | Embroidery, Geometric, Contemporary / Modern, Crewel, Dots / Circles |
| <b>SCALE</b>        | <b>RAILROADED</b>  |
| Large               | Not Railroaded   |



|                      |  |   |                                    |
|----------------------|--|---|------------------------------------|
| <b>WIDTH</b>         | <b>VERTICAL REPEAT</b>                   | <b>HORIZONTAL REPEAT</b>                      | <b>CONTENT</b>                     |
| 51.00 in (129.54 cm) | 9.25 in (23.50 cm)                       | 8.50 in (21.59 cm)                            | 47% Cotton, 43% Viscose, 10% Linen |
| <b>BACKING</b>       | <b>FIRE CODES</b>                        | <b>DOUBLE RUBS</b>                            | <b>PRODUCT NUMBER</b>              |
|                      | UFAC Class I / NFPA 260, Passes NFPA 260 | Exceeds 36,000 Double Rubs (Wyzenbeek Method) | 1869303                            |
| <b>COUNTRY</b>       | <b>CLEANING CODES</b>                    |   |                                    |
| India                | S  |   |                                    |

**ADDITIONAL PRODUCT NOTES**

Passes 35,000 Martindale Tst, Ca Tb 117-2013, Exclusive Pattern, Embroidered Textiles Are Not, Guaranteed For Precise Color, Matching And Colorfastness., Color Placement Of Embroidery, May Vary. All Measurements, Quoted For Repeats Are, Approximate.