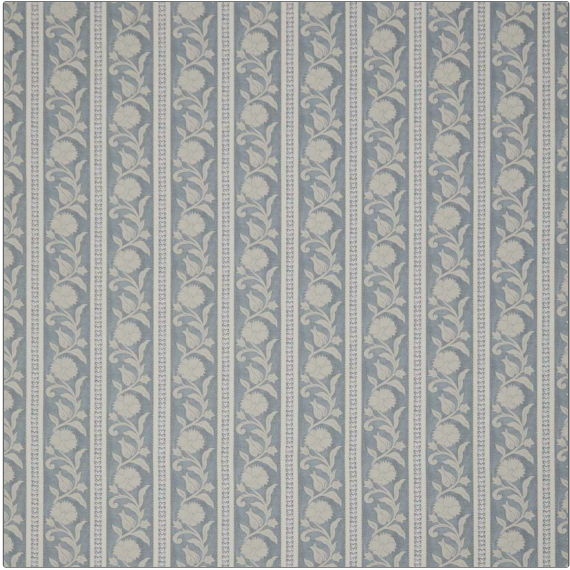


**PATTERN** Sambourne Stripe  
**COLOR** 02

<b>BRAND</b>	<b>APPLICATION</b>
Liberty of London	Fabric
<b>USES</b>	<b>CATEGORIES</b>
Bedding, Drapery, Multipurpose, Upholstery	Prints, Linen
<b>COLORS</b>	<b>DESIGN TYPES</b>
Blue	Leaves, Stripes
<b>SCALE</b>	<b>RAILROADED</b>
Medium	Not Railroaded



<b>WIDTH</b>	<b>VERTICAL REPEAT</b>	<b>HORIZONTAL REPEAT</b>	<b>CONTENT</b>
56.00 in (142.24 cm)	10.20 in (25.91 cm)	8.90 in (22.61 cm)	63% Cotton, 37% Linen
<b>BACKING</b>	<b>FIRE CODES</b>	<b>DOUBLE RUBS</b>	<b>PRODUCT NUMBER</b>
	UFAC Class I / NFPA 260	Exceeds 35,000 Double Rubs	2023602
<b>COUNTRY</b>	<b>CLEANING CODES</b>		
Italy	S		

**ADDITIONAL PRODUCT NOTES**

Passes 35,000 Martindale Tst, Ca Tb 117-2013