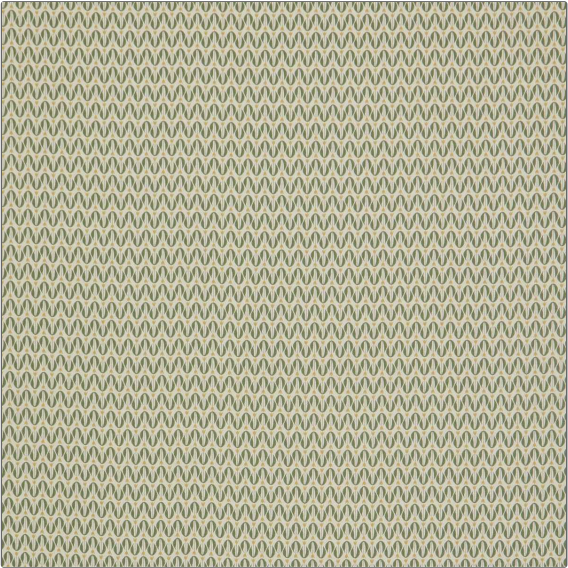


| | |
|---------|--------|
| PATTERN | Lutea |
| COLOR | Lichen |

| | |
|---|---------------|
| BRAND | APPLICATION |
| Liberty of London | Fabric |
| USES | CATEGORIES |
| Bedding, Drapery, Multipurpose, Upholstery | Prints, Linen |
| BOOK | COLORS |
| LOL Botanical Atlas Fabrics | Gold, Green |
| DESIGN TYPES | SCALE |
| Geometric, Print Pattern, Stripes | Small |
| RAILROADED | |
| Not Railroaded | |



| | | | |
|----------------------|-------------------------|----------------------------|-----------------------|
| WIDTH | VERTICAL REPEAT | HORIZONTAL REPEAT | CONTENT |
| 54.00 in (137.16 cm) | 1.20 in (3.05 cm) | 1.30 in (3.30 cm) | 63% Cotton, 37% Linen |
| BACKING | FIRE CODES | DOUBLE RUBS | PRODUCT NUMBER |
| | UFAC Class I / NFPA 260 | Exceeds 35,000 Double Rubs | 2023701 |
| DATE BOOKED | COUNTRY | CLEANING CODES | |
| 06/2024 | Italy | S | |

| |
|--|
| ADDITIONAL PRODUCT NOTES |
| Passes 35,000 Martindale Tst, Ca Tb 117-2013 |