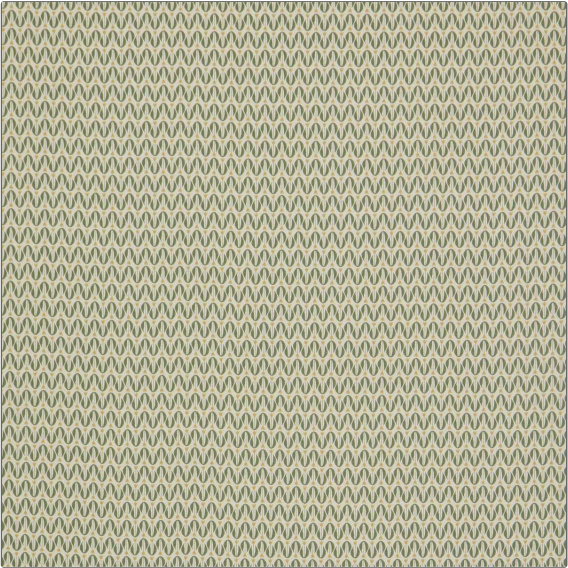


| | |
|---------|-------|
| PATTERN | Lutea |
| COLOR | 01 |



| | |
|---|--------------------------------------|
| BRAND | APPLICATION |
| Liberty of London | Fabric |
| USES | CATEGORIES |
| Bedding, Drapery, Multipurpose, Upholstery | Prints, Linen |
| COLORS | DESIGN TYPES |
| Gold, Green | Geometric, Print Pattern, Stripes |
| SCALE | RAILROADED |
| Small | Not Railroaded |

| | | | |
|----------------------|-------------------------|----------------------------|-----------------------|
| WIDTH | VERTICAL REPEAT | HORIZONTAL REPEAT | CONTENT |
| 54.00 in (137.16 cm) | 1.20 in (3.05 cm) | 1.30 in (3.30 cm) | 63% Cotton, 37% Linen |
| BACKING | FIRE CODES | DOUBLE RUBS | PRODUCT NUMBER |
| | UFAC Class I / NFPA 260 | Exceeds 35,000 Double Rubs | 2023901 |
| COUNTRY | CLEANING CODES | | |
| Italy | S | | |

| |
|--|
| ADDITIONAL PRODUCT NOTES |
| Passes 35,000 Martindale Tst, Ca Tb 117-2013 |