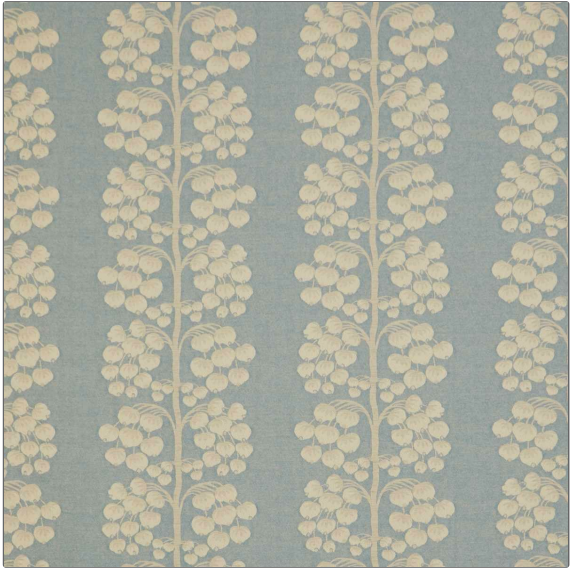


PATTERN	Berry Tree Weave
COLOR	Flax Flower



BRAND	APPLICATION
Liberty of London	Fabric
USES	CATEGORIES
Bedding, Drapery	Wool / Faux Wool, Wovens, Linen
BOOK	COLORS
LOL Botanical Atlas Fabrics	Light Blue
DESIGN TYPES	RAILROADED
Leaves, Stripes	Not Railroaded

WIDTH	VERTICAL REPEAT	HORIZONTAL REPEAT	CONTENT
51.00 in (129.54 cm)	14.60 in (37.08 cm)	12.60 in (32.00 cm)	45% Polyester, 30% Wool, 25% Linen
BACKING	FIRE CODES	DOUBLE RUBS	PRODUCT NUMBER
	UFAC Class I / NFPA 260	Exceeds 10,000 Double Rubs	2027402
DATE BOOKED	COUNTRY	CLEANING CODES	
06/2024	India	S	

ADDITIONAL PRODUCT NOTES
Passes 10,000 Martindale Tst, Ca Tb 117-2013