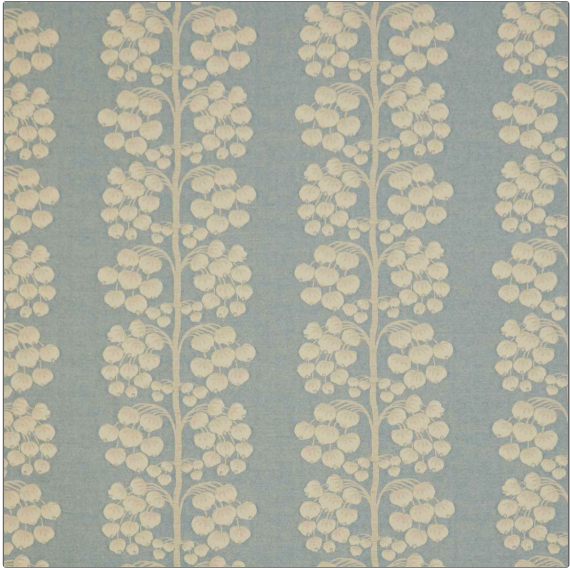


PATTERN Berry Tree Weave
COLOR 02



BRAND	APPLICATION
Liberty of London	Fabric
USES	CATEGORIES
Bedding, Drapery	Wool / Faux Wool, Wovens, Linen
COLORS	DESIGN TYPES
Light Blue	Leaves, Stripes
RAILOADED	
Not Railroaded	

WIDTH	VERTICAL REPEAT	HORIZONTAL REPEAT	CONTENT
51.00 in (129.54 cm)	14.60 in (37.08 cm)	12.60 in (32.00 cm)	45% Polyester, 30% Wool, 25% Linen
BACKING	FIRE CODES	DOUBLE RUBS	PRODUCT NUMBER
	UFAC Class I / NFPA 260	Exceeds 10,000 Double Rubs	2027502
COUNTRY	CLEANING CODES		
India	S		

ADDITIONAL PRODUCT NOTES

Passes 10,000 Martindale Tst, Ca Tb 117-2013