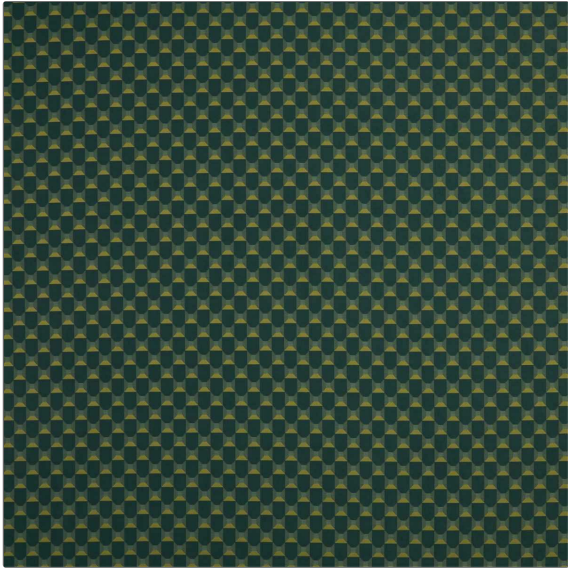


**PATTERN** Obi Check  
**COLOR** 06

<b>BRAND</b>	<b>APPLICATION</b>
Liberty of London	Fabric
<b>USES</b>	<b>CATEGORIES</b>
Bedding, Drapery, Multipurpose, Upholstery	Wovens
<b>COLORS</b>	<b>DESIGN TYPES</b>
Aqua / Teal	Geometric
<b>SCALE</b>	<b>RAILROADED</b>
Small	Not Railroaded



<b>WIDTH</b>	<b>VERTICAL REPEAT</b>	<b>HORIZONTAL REPEAT</b>	<b>CONTENT</b>
56.00 in (142.24 cm)	2.00 in (5.08 cm)	1.80 in (4.57 cm)	82% Viscose, 18% Polyester
<b>BACKING</b>	<b>FIRE CODES</b>	<b>DOUBLE RUBS</b>	<b>PRODUCT NUMBER</b>
	UFAC Class I / NFPA 260	Exceeds 30,000 Double Rubs	2031506
<b>COUNTRY</b>	<b>CLEANING CODES</b>		
Italy	S		

**ADDITIONAL PRODUCT NOTES**

Passes 30,000 Martindale Tst, Ca Tb 117-2013