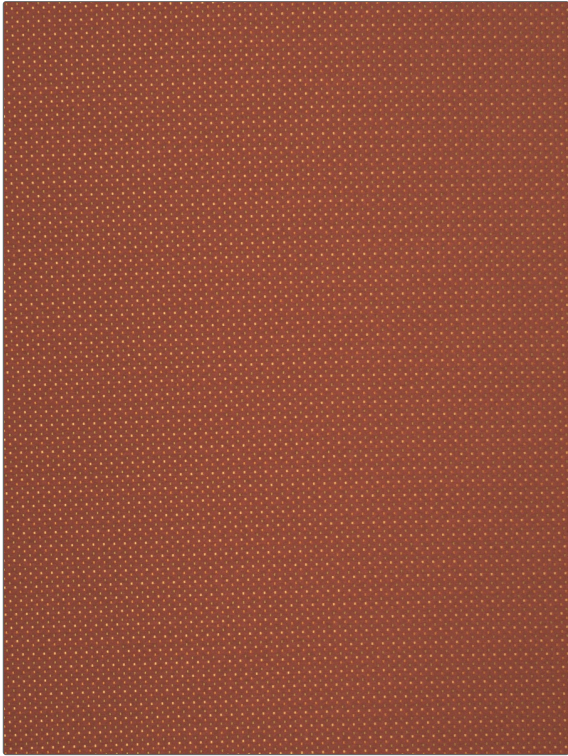


# FABRICUT<sup>®</sup> Fabric Product Details

**PATTERN** Coho  
**COLOR** 02

<b>BRAND</b>	<b>APPLICATION</b>
Fabricut	Fabric
<b>USES</b>	<b>CATEGORIES</b>
Bedding, Drapery, Multipurpose	NFPA 701 FR, Taffeta, Solids / Small Scale Patterns, Faux Silk
<b>COLORS</b>	<b>DESIGN TYPES</b>
Red	Small Scale Woven, Dots / Circles
<b>SCALE</b>	<b>RAILROADED</b>
Small	Not Railroaded



<b>WIDTH</b>	<b>VERTICAL REPEAT</b>	<b>HORIZONTAL REPEAT</b>	<b>CONTENT</b>
54.00 in (137.16 cm)	0.60 in (1.52 cm)	0.20 in (0.51 cm)	100% Polyester
<b>BACKING</b>	<b>FIRE CODES</b>	<b>DOUBLE RUBS</b>	<b>PRODUCT NUMBER</b>
	UFAC Class I, Passes "NFPA 701" 2010	Exceeds 63,000 Double Rubs (Wyzenbeek Method)	2055002
<b>COUNTRY</b>	<b>CLEANING CODES</b>		
Japan	S		

**ADDITIONAL PRODUCT NOTES**

Exclusive Pattern