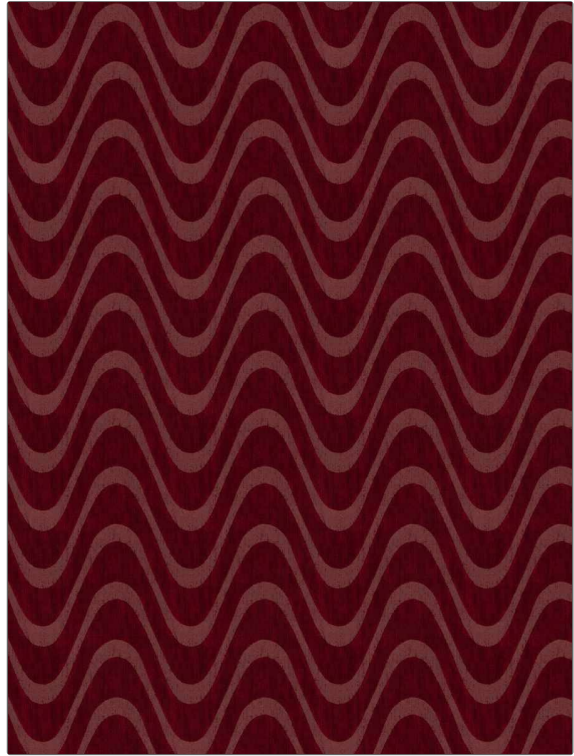


PATTERN Thoren
COLOR Lipstick

BRAND	APPLICATION
Fabricut	Fabric
USES	CATEGORIES
Upholstery	Easy To Clean, Chenille, Eco / Environment Plus
COLORS	DESIGN TYPES
Red	Geometric, Contemporary / Modern
SCALE	RAILOADED
Large	Railroaded



WIDTH	FINISH	VERTICAL REPEAT	HORIZONTAL REPEAT
54.00 in (137.16 cm)	Soil & Stain Repellent Finish	2.76 in (7.01 cm)	7.09 in (18.01 cm)
CONTENT	BACKING	FIRE CODES	DOUBLE RUBS
100% Polyester	100% Acrylic Backing	UFAC Class I / NFPA 260	Exceeds 50,000 Double Rubs (Wyzenbeek Method)
PRODUCT NUMBER	COUNTRY	CLEANING CODES	
2124304	Turkey	S	

ADDITIONAL PRODUCT NOTES
Soil & Stain Repellent Finish, Pfas-Free, Ca Tb 117-2013, 100% Acrylic Backing, Shown Railroaded, Exclusive Pattern