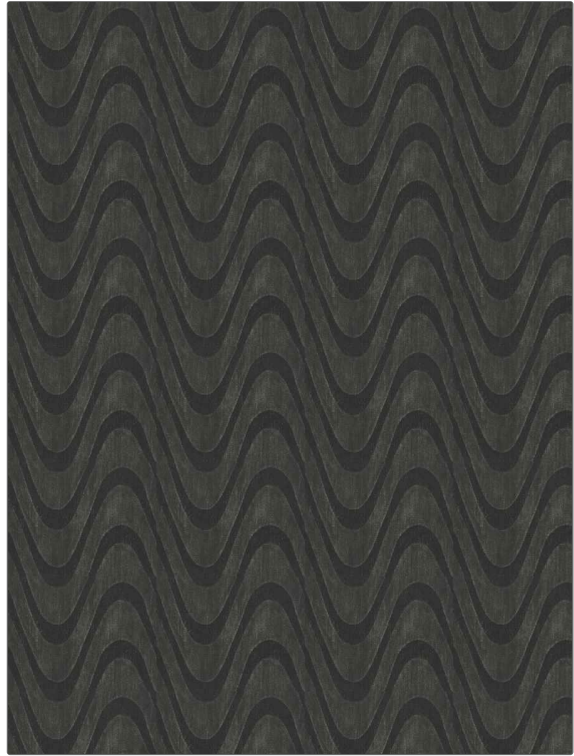


PATTERN Thoren
COLOR 01

| | |
|---------------|---|
| BRAND | APPLICATION |
| Fabricut | Fabric |
| USES | CATEGORIES |
| Upholstery | Easy To Clean, Chenille, Eco / Environment Plus |
| COLORS | DESIGN TYPES |
| Black, Grey | Geometric, Contemporary / Modern |
| SCALE | RAILOADED |
| Large | Railroaded |



| | | | |
|-----------------------|-------------------------------|-------------------------|---|
| WIDTH | FINISH | VERTICAL REPEAT | HORIZONTAL REPEAT |
| 54.00 in (137.16 cm) | Soil & Stain Repellent Finish | 2.76 in (7.01 cm) | 7.09 in (18.01 cm) |
| CONTENT | BACKING | FIRE CODES | DOUBLE RUBS |
| 100% Polyester | 100% Acrylic Backing | UFAC Class I / NFPA 260 | Exceeds 50,000 Double Rubs (Wyzenbeek Method) |
| PRODUCT NUMBER | COUNTRY | CLEANING CODES | |
| 2124401 | Turkey | S | |

ADDITIONAL PRODUCT NOTES

Soil & Stain Repellent Finish, Pfas-Free, Ca Tb 117-2013, 100% Acrylic Backing, Shown Railroaded, Exclusive Pattern