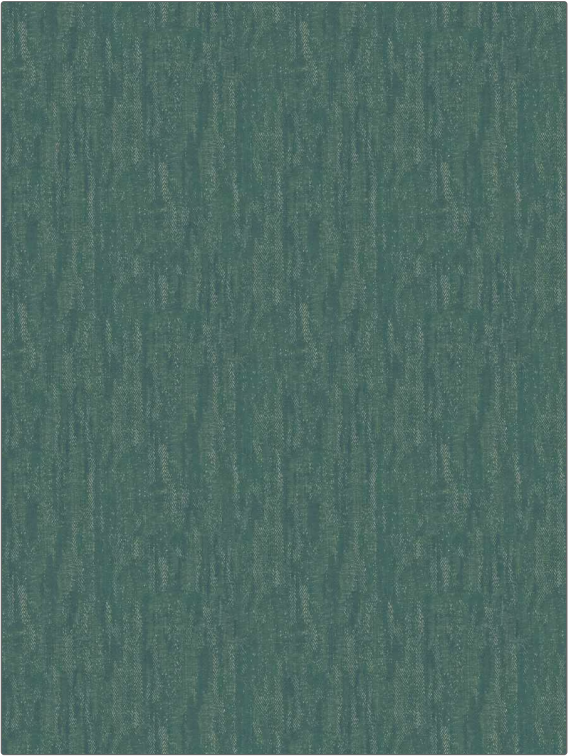


PATTERN	Kieran
COLOR	16

BRAND	APPLICATION
Fabricut	Fabric
CATEGORIES	COLORS
Easy To Clean, Wovens, Chenille	Aqua / Teal
DESIGN TYPES	RAILROADED
Herringbone, Texture Plain, Contemporary / Modern	Not Railroaded



WIDTH	FINISH	VERTICAL REPEAT	HORIZONTAL REPEAT
54.00 in (137.16 cm)	Alta Performance	0.00 in (0.00 cm)	0.00 in (0.00 cm)
CONTENT	BACKING	FIRE CODES	DOUBLE RUBS
63% Polyester, 18% Cotton, 10% Linen, 9% Viscose	Light Acrylic Backing	UFAC Class I / NFPA 260	Exceeds 50,000 Double Rubs (Wyzenbeek Method)
PRODUCT NUMBER	COUNTRY	CLEANING CODES	
2158316	Turkey	WS	

ADDITIONAL PRODUCT NOTES
Alta Performance, Passes 26,000 Martindale Tst, Ca Tb 117-2013, Light Acrylic Backing, Exclusive Pattern