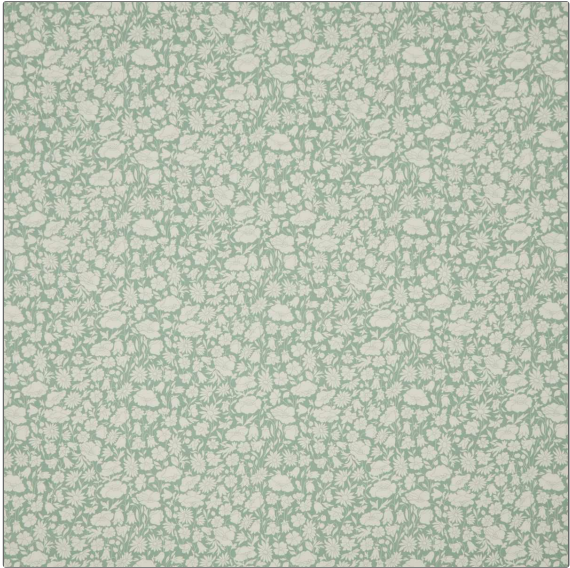


**PATTERN** Poppy Grace  
**COLOR** Salvia



<b>BRAND</b>	<b>APPLICATION</b>
Liberty of London	Fabric
<b>USES</b>	<b>CATEGORIES</b>
Bedding, Drapery, Multipurpose, Upholstery	Prints
<b>BOOK</b>	<b>COLORS</b>
LOL House Florals	Aqua / Teal
<b>DESIGN TYPES</b>	<b>SCALE</b>
Floral, Print Pattern	Medium
<b>RAILROADED</b>	
Not Railroaded	

<b>WIDTH</b>	<b>VERTICAL REPEAT</b>	<b>HORIZONTAL REPEAT</b>	<b>CONTENT</b>
53.00 in (134.62 cm)	11.80 in (29.97 cm)	17.80 in (45.21 cm)	100% Cotton
<b>BACKING</b>	<b>FIRE CODES</b>	<b>DOUBLE RUBS</b>	<b>PRODUCT NUMBER</b>
	UFAC Class I / NFPA 260	Exceeds 18,000 Double Rubs	2204903
<b>DATE BOOKED</b>	<b>COUNTRY</b>	<b>CLEANING CODES</b>	
06/2024	Spain	S	

**ADDITIONAL PRODUCT NOTES**

Passes 18,000 Martindale Tst, Ca Tb 117-2013