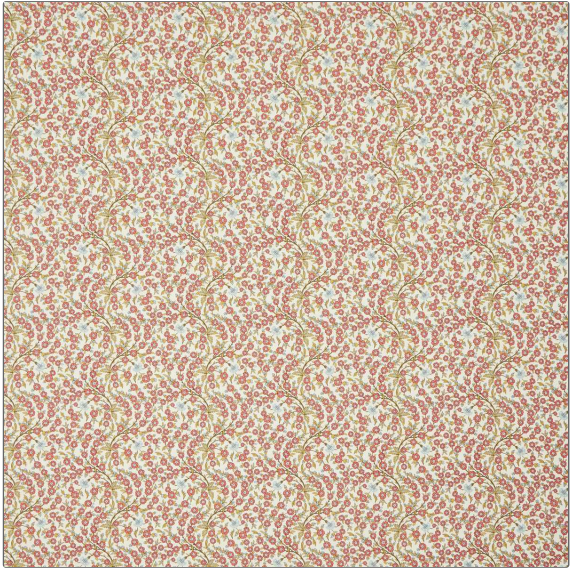


PATTERN Empress Vine
COLOR Lacquer



| | |
|--|--------------------|
| BRAND | APPLICATION |
| Liberty of London | Fabric |
| USES | CATEGORIES |
| Bedding, Drapery, Multipurpose, Upholstery | Prints |
| BOOK | COLORS |
| LOL House Florals | Red |
| DESIGN TYPES | SCALE |
| Floral, Print Pattern | Medium |
| RAILROADED | |
| Not Railroaded | |

| | | | |
|----------------------|-------------------------|----------------------------|-----------------------|
| WIDTH | VERTICAL REPEAT | HORIZONTAL REPEAT | CONTENT |
| 54.00 in (137.16 cm) | 5.30 in (13.46 cm) | 6.70 in (17.02 cm) | 100% Cotton |
| BACKING | FIRE CODES | DOUBLE RUBS | PRODUCT NUMBER |
| | UFAC Class I / NFPA 260 | Exceeds 30,000 Double Rubs | 2208804 |
| DATE BOOKED | COUNTRY | CLEANING CODES | |
| 06/2024 | Spain | S | |

ADDITIONAL PRODUCT NOTES

Passes 30,000 Martindale Tst