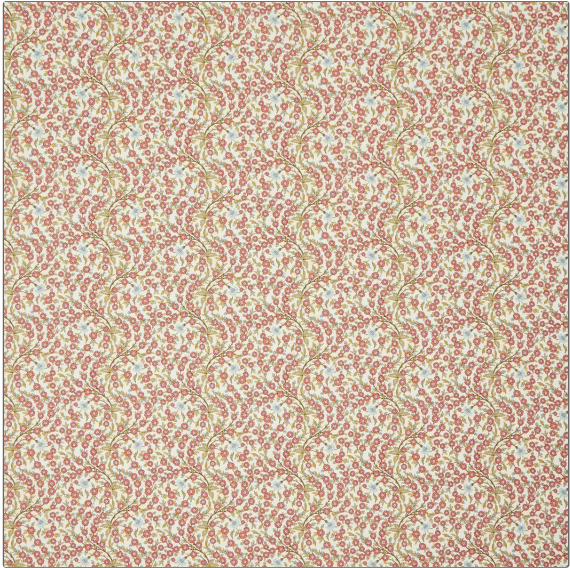


**PATTERN** Empress Vine  
**COLOR** 04

|   |                       |
|---|-----------------------|
| <b>BRAND</b>                                  | <b>APPLICATION</b>    |
| Liberty of London                             | Fabric                |
| <b>USES</b>                                   | <b>CATEGORIES</b>     |
| Bedding, Drapery,<br>Multipurpose, Upholstery | Prints                |
| <b>COLORS</b>                                 | <b>DESIGN TYPES</b>   |
| Red   | Floral, Print Pattern |
| <b>SCALE</b>                                  | <b>RAILROADED</b>     |
| Medium  | Not Railroaded        |



|                      |                         |                            |                       |
|----------------------|-------------------------|----------------------------|-----------------------|
| <b>WIDTH</b>         | <b>VERTICAL REPEAT</b>  | <b>HORIZONTAL REPEAT</b>   | <b>CONTENT</b>        |
| 54.00 in (137.16 cm) | 5.30 in (13.46 cm)      | 6.70 in (17.02 cm)         | 100% Cotton           |
| <b>BACKING</b>       | <b>FIRE CODES</b>       | <b>DOUBLE RUBS</b>         | <b>PRODUCT NUMBER</b> |
|                      | UFAC Class I / NFPA 260 | Exceeds 30,000 Double Rubs | 2209204               |
| <b>COUNTRY</b>       | <b>CLEANING CODES</b>   |                            |                       |
| Spain                | S                       |                            |                       |

**ADDITIONAL PRODUCT NOTES**

Passes 30,000 Martindale Tst